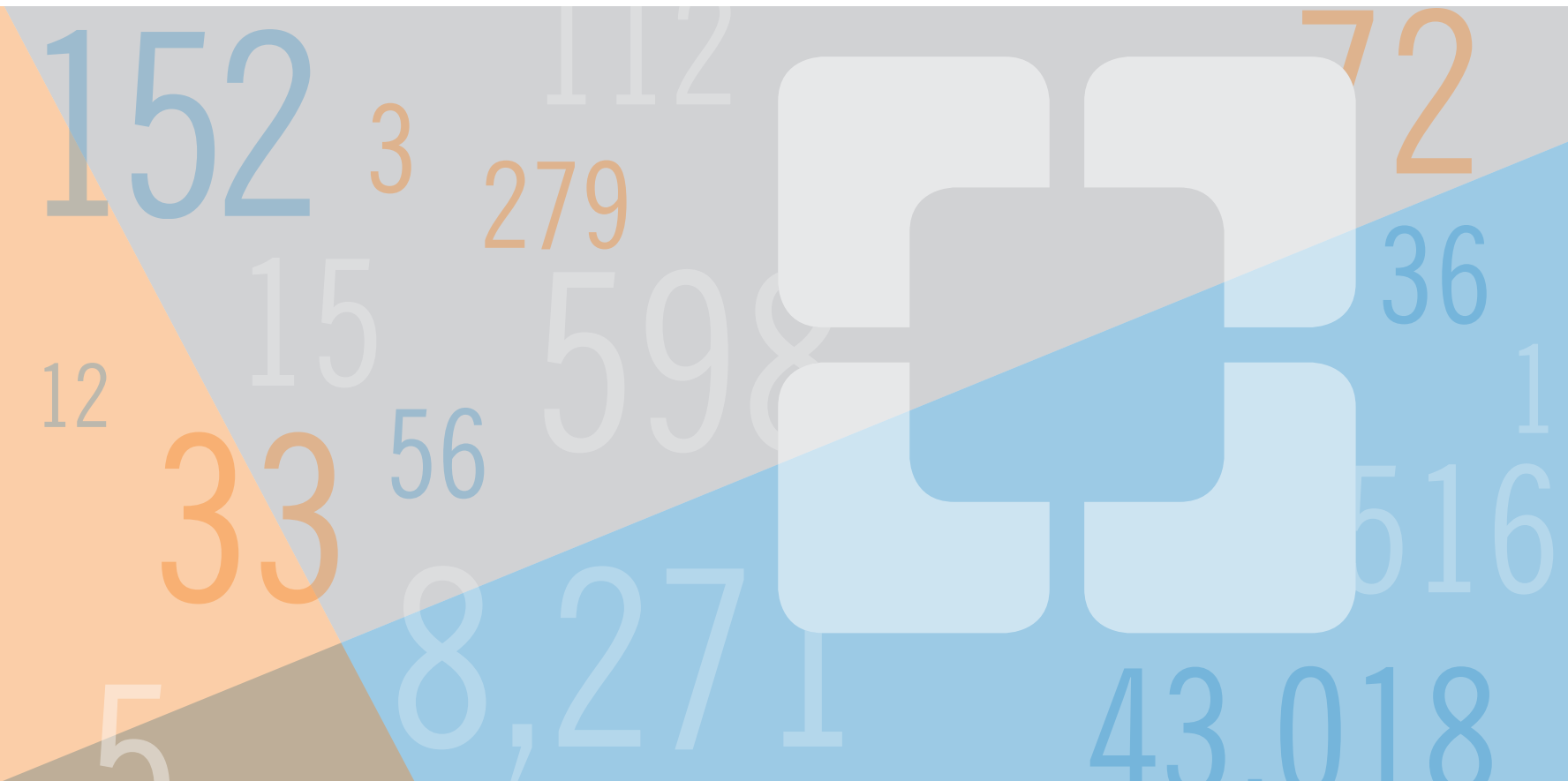


Philanthropy at Work by the Numbers





Wael K. Barsoum, MD
President

Dear Friends,

We are honored to share with you the update of the Maroone Cancer Center and we thank you for your support which allows us to provide high-quality cancer care with a caring, personal touch. With your help we are uniquely positioned to understand the story of our cancer patients and are thankful that you have made us part of your vision.

Caregivers at the Maroone Cancer Center provide comprehensive, compassionate team care with multiple specialists working together to care for the whole patient. We offer a wide range of treatment options and access to new protocols, and perhaps equally important, offer support services to patients and their families.

Every gift to the Maroone Cancer Center helps make the best-possible healthcare accessible to the greatest number of people as we continue to focus on putting Patients First.

We hope you see the impact we are having with this update by the numbers.

Sincerely,

Wael Barsoum, MD | President | Cleveland Clinic Florida

8,271 PATIENTS HAVE BEEN SEEN IN OUR HEMATOLOGY AND RADIATION THERAPY DEPARTMENT SINCE JANUARY 2015

Cancer is a reality that touches many lives, and it is our mission to bring leading-edge, comprehensive and personalized cancer care to our patients.

Based on a month-to-month comparison from April 2015 to April 2016, we have accommodated an increased patient volume of **26 percent** and are operating at a **7 percent** higher rate than anticipated. Of our overall patient population, **71 percent** live within 30 miles of Cleveland Clinic Florida, and **22.8 percent** seek our services from throughout the United States and the world. An average of **6.2 percent** of our international patients come from The Bahamas, Cayman Islands, Haiti, Dominican Republic, Guatemala, El Salvador, Honduras, Nicaragua, Venezuela, Guyana and Ecuador.

8 NEW ADDITIONS TO OUR CAREGIVER TEAM

- 1 genetic counselor
- 1 radiation oncologist (we now have a total of 3)
- 2 medical oncologists (we now have a total of 8)
- 4 full-time caregivers

13 CLINICAL TRIALS

 are underway including hormone therapies and targeting cells. These are in collaboration with the Cancer Institute in Cleveland, the National Cancer Institute and pharmaceutical companies.

1 NEW DEVICE

 has been developed to improve how radiation is administered by Radiation Oncology Director, John Greskovich, Jr., MD, and the Biomedical Engineering Department in Ohio.

9 TUMOR BOARDS

 meet monthly to ensure the best possible patient outcomes. A tumor board is made up of multiple physicians from various specialties to discuss individual patients.

Radiologist, Albert Parlade, MD, Transplant Surgeon, Diego Reino, MD and Radiologist, Mark Berman, MD

36 COMMUNITY OUTREACH EVENTS AT CLEVELAND

CLINIC FLORIDA focus on providing health education for the public and medical professionals. In the past year we held:

- › **11 events** for colorectal cancer risk screenings
- › **15 events** for breast cancer awareness
- › **5 events** for stomach, gynecologic, prostate and pancreatic cancer awareness
- › **3 events** to teach the community about new radiation therapies
- › **2 open houses** at the Maroon Cancer Center for supporters and the community

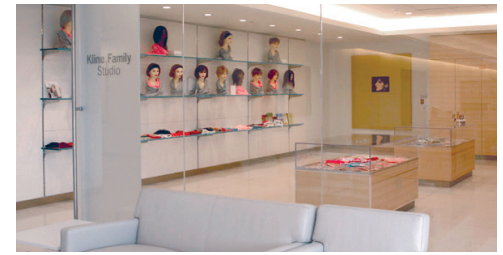
72 HIGH SCHOOL SENIORS AND PRE-MED COLLEGE STUDENTS

participate each year in the Summer Scholars Program. Supported by philanthropy, the program gives young adults exposure to the medical field.



Students pictured with Dana Sands, MD, Program Director (front, far right)

52 PATIENTS have benefited from Cleveland Clinic Emergency Fund to help with basic needs such as gas and food, totaling **\$2,600** in gift cards.



112 WOMEN have attended the Look Good Feel Better class that we offer monthly in partnership with the American Cancer Society. The class is open to our cancer patients and staffed by volunteers. An average of **7 women** attend each class and learn ways to increase well-being and boost self-esteem, including specific tips on taking care of skin during cancer treatment, applying makeup, and wearing hats and scarves.

279 PATIENTS have received complimentary wigs and caps in the Kline Family Studio and we recently expanded this service to our patients in our Palm Beach county clinic. We understand the impact of a cancer diagnosis and are committed to support each patient on this journey.

THE MAROONE CANCER CENTER

is divided into 2 departments, Hematology-Oncology and Radiation Oncology. To date, Hematology-Oncology has **39 caregivers** and **8 physicians** and Radiation Oncology has **15 caregivers, 3 physicians** and **3 physicists**.

AS OF JANUARY 1, 2011:

- › The Campaign for Cleveland Clinic Florida has **5,274 donors**
- › The Maroone Cancer Center has **516 donors**

HEALING THROUGH ART AND MUSIC

The arts and medicine program, made possible through philanthropy, aims to reduce discomfort and lessen the emotional and psychological side effects that can result from a cancer diagnosis and treatment.

Art therapy is offered by a full-time registered specialist who holds a master's degree in family and marriage counseling. When painting, sculpting or sketching, individuals and groups have found ways to process and share their feelings and experiences.

Music therapy is offered by a licensed therapist who meets with patients one-on-one or in a group setting.

56 PATIENTS participate in art therapy each week.

**33 CHILDREN OF
CANCER PATIENTS** enrolled in our summer camp.



"Even though Cleveland Clinic Florida treats thousands of patients a day, the level of care I received was so personal that I felt like I was the only patient being treated at the hospital."

— Allie Santana



Children of cancer patients finding new outlets in the healing environment of our art therapy studio.

1 CLINICAL TRIAL is underway for art therapy to analyze its impact on the healing process.

12 PATIENTS participate in music therapy each week.

2 GROUP MUSIC THERAPY SESSIONS are offered each month.

5 DIFFERENT MUSICAL PROGRAMS are offered, including:

- › Music listening
- › Music-assisted relaxation and imagery
- › Musical improvisation
- › Authentic movement
- › Creative writing and songwriting



Top to bottom: Patient receiving one-on-one music therapy. Performances by the Heifetz Institute for hospitalized patients.



MASSAGE AND YOGA

140+ PATIENTS received massage therapy while having treatment in the infusion suite.

598 SESSIONS of Reiki, massage therapy, facials, craniosacral therapy and reflexology have been provided to patients in the Kline Family Studio.

Patients are offered yoga classes to help manage stress and overcome anxiety and Creative Healing Retreats give patients and their families an opportunity to unwind.

Cleveland Clinic Florida encourages members of the oncology staff to take time for yoga and relaxing retreats to help reduce the stress of caregiving and offers services in which they can participate.

MEET OUR MASSAGE THERAPIST

“If I can provide even a small measure of relief from their stress and anxiety,” Linda says, “then I believe their ability to endure the whole progression of their treatment and recovery is enhanced and strengthened. They are the most wonderful and appreciative patients I’ve ever worked with and I feel blessed to help support them and to share in their healing process.”



Linda White, LMT, RYT500

CLEVELAND CLINIC FLORIDA FUN FACTS

43,018

purchases have been recorded at the AutoNation Café since it opened in March 2015. The café, which is open to patients, visitors and caregivers at the Maroon Cancer Center, has a salad bar and offers soups, sandwiches and smoothies.

3 YEARS

as a Breast Center of Excellence with full accreditation from the National Accreditation Program for Breast Centers, American College of Surgeons

3 YEARS

as a national cancer center with commendation from the Commission on Cancer, American College of Surgeons



The Power
of Every *One.*
Campaign for Cleveland Clinic Florida

PHILANTHROPY AT WORK | Maroone Cancer Center

For more information, please contact us at 954.659.6720 or by email to philanthropy@ccf.org.