

MARCH 16, 2020

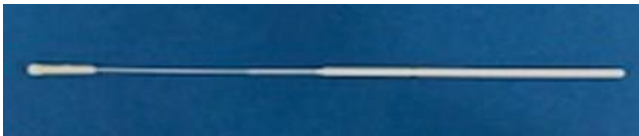
PA

POINTS ON PRACTICE, POLICY, AND PROCEDURE

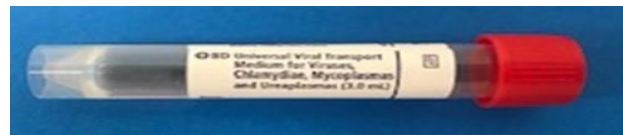
CLEVELAND CLINIC NURSING INSTITUTE

COVID 19 NASOPHARYNGEAL SWAB

The kit contain one swabs and transport medium



Nasopharyngeal



Universal Transport Medium (UTM)

One nasopharyngeal swab to be obtained at the designated testing site
Testing includes Influenza, RSV and COVID

Procedure: Nasopharyngeal Specimen Collection

1. Tell the patient that he may gag or feel the urge to sneeze during the swabbing, but that the procedure takes less than 1 minute.
2. Instruct the patient to sit erect, facing you.
3. Put on gloves. Put on a mask and other personal protective equipment as necessary.
4. Open the package without contaminating the swab.
5. Instruct the patient to tilt head back.
6. Pass the swab gently through the patient's more patent nostril about 3" to 4" into the nasopharynx, keeping the swab near septum and the floor of the nose. Rotate the swab gently but quickly, and then remove it.
7. Remove the cap from the Universal Transport Media (UTM), insert the swab into the transport medium, and break the swab shaft at pre-molded break point.
8. Close the cap tightly, place specimen in biohazard bag. Place on wet ice or cold pack and complete a laboratory request form.
9. Take directly to the lab and do not use pneumatic tube system.

References

BD Universal Viral Transport (2020). <https://www.bd.com/en-us/offerings/capabilities/specimen-collection/swab-based-specimen-collection/bd-universal-viral-transport-system>

Lippincott Procedure. (2016). Nasopharyngeal specimen collection. Retrieved from <https://procedures.lww.com/lnp/view.do?pld=1508029&hits=nasopharyngeal.specimen.specimens&a=true&ad=false>

This newsletter is an educational tool to inform staff of Enterprise planned policy changes. Each region's newsletter addresses site-specific policy changes. Each individual hospital will provide internal notification once a new or revised policy goes into effect