

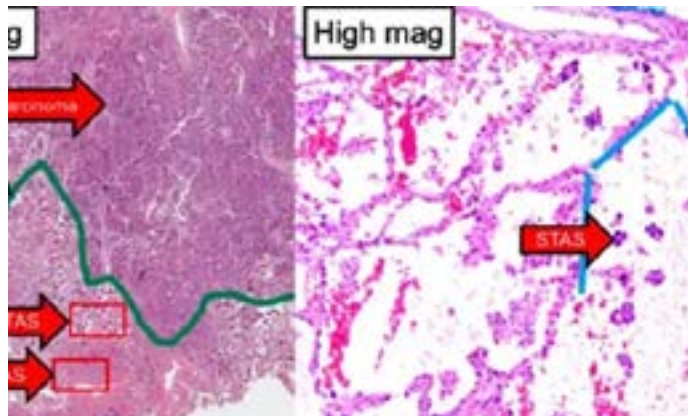
Cleveland Clinic

Respiratory Exchange



[Two Studies Show Potential of a Molecular Biomarker to Improve Lung Cancer Screening](#)

[The impact of quantum computing](#)



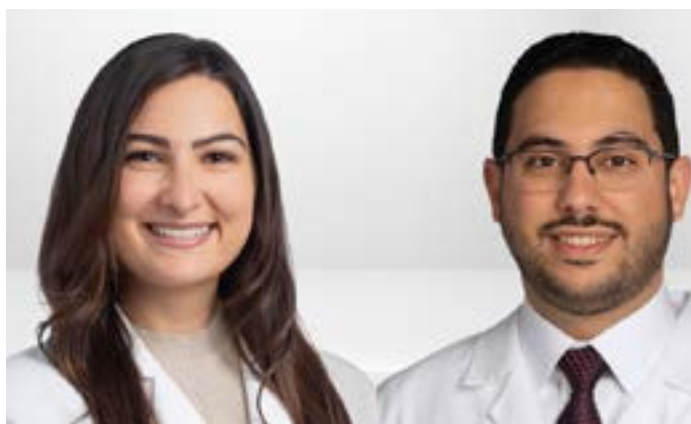
[Lung Cancer Study Links Preoperative Factors with Spread Through Air Spaces](#)

[The preoperative markers to know](#)



[Highlights from CHEST 2024](#)

[Major takeaways from the conference](#)



[Real-World Insights: Rethinking Small Cell Lung Cancer Treatment with Atezolizumab](#)

[A deep dive into clinical trials](#)

REFERRALS
855.REFER.123
(855.733.3712)

**Same-day appointments
available.**



[Consult QD
Pulmonology](#)



[Fellowships and More](#)



[Respiratory
Institute](#)

**SUBSCRIBE TO
RESPIRATORY EXCHANGE**