

Nomogram (graphical application of prediction regression algorithm)

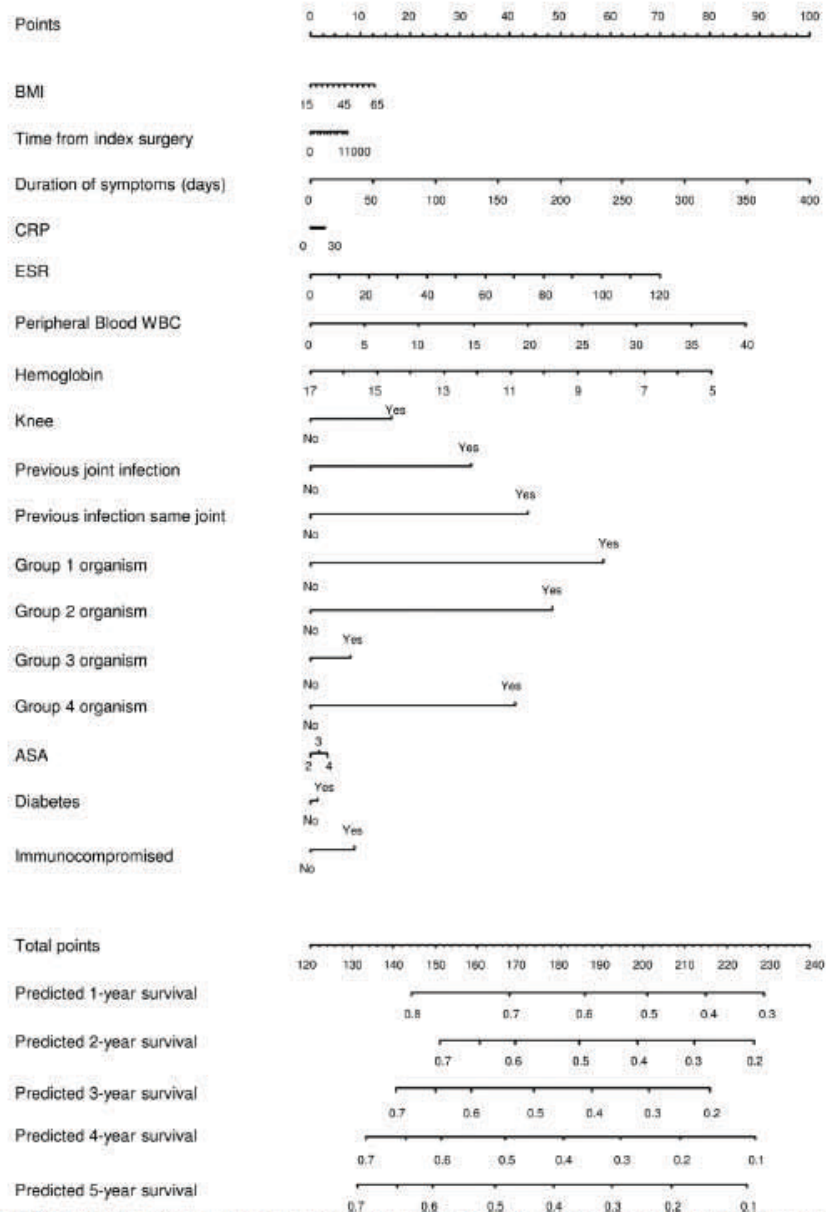


Fig. 4. Instructions for nomogram: Locate the patient's BMI on the BMI axis. Draw a line straight upward to the Points axis to determine how many points toward predicted survival the patient receives for his/her BMI. Repeat this process for the remaining axes, each time drawing straight upward to the Points axis. Sum the points achieved for each predictor, and find this location on the Total points axis. Draw a line straight down to find the patient's probability of success at 1, 2, 3, 4, and 5 years postoperation.

Reprinted from *Journal of Arthroplasty*, Vol. 27(6), LT Buller, FY Sabry, RW Easton, AK Klika, WK Barsoum, The preoperative prediction of success following irrigation and debridement with polyethylene exchange for hip and knee prosthetic joint infections, pp. 857-864. Copyright 2012, with permission from Elsevier.

<http://www.sciencedirect.com/science/journal/08835403>