



# Fellowship in Psychosomatic Medicine

## Department of Psychiatry and Psychology



Fellows will rotate through each of the following Immersion Clinics:

- Cardiology
- Multiple Sclerosis
- Epilepsy
- Movement Disorders
- Women’s Health
- Psycho Oncology
- Transplant
- HIV

Fellows will participate Continuity Clinics:

- Psychosomatic Medicine Clinic
- Specialty Immersion Clinics
- Intensive Immersion Clinic

Reasons for consultation on the inpatient CL service include:

- Delirium and Agitation
- Substance Dependence/Withdrawal
- Depression and Anxiety
- Capacity for Decision Making
- Serotonin Syndrome/NMS
- Catatonia
- Conversion Disorder
- Coping with Medical Illness

Consulting services include:

- Medical, Surgical and Cardiac ICUs
- Cardiology
- Neurology and Neurosurgery
- Epilepsy Monitoring Unit
- Colorectal Surgery and GI
- Internal Medicine
- Bone Marrow Transplant/Oncology
- Palliative Medicine

Program Overview

The Psychosomatic Medicine Fellowship at the Cleveland Clinic offers a unique training opportunity at one of the most renowned medical centers in the world. The Cleveland Clinic continues to rank amongst the best hospitals in the United States, placing fourth of all *U.S. Hospitals in U.S. News and World Report’s* “2014-2015 Best Hospitals.” Our institution has the highest acuity of medical ICU and surgical ICU patients in the country. Among Cleveland Clinic’s highly ranked programs, 9 placed within the Top 5, and for the 20th year in a row, cardiology and cardiac surgery has ranked No. 1 in the country.

The Psychosomatic Medicine Fellowship has a distinguished faculty with expertise in a broad variety of clinical subspecialty areas. Fellows will have one month of dedicated research time. Our fellows have presented their research locally, regionally and nationally, including poster, oral and workshop presentations at the Cleveland Consultation Liaison Society, American Psychiatric Association and Academy of Psychosomatic Medicine annual meetings.

Curriculum

Inpatient Consultation Liaison

Fellows rotate on inpatient consultation liaison psychiatry for 11 months of the year. The majority of that time is spent on the Cleveland Clinic Main Campus, where fellows perform advanced-level consults, are actively involved in teaching, and have the opportunity to run a team as an acting attending. The main campus consultation liaison service consists of three attending-led teams, residents, medical students and a dedicated licensed clinical social worker to ensure wrap-around services. In addition to work on Main Campus, fellows will spend one month at one of the Cleveland Clinic Health System regional hospitals, where they will be exposed to consultation liaison psychiatry in the smaller hospital setting.

Outpatient Consultation Liaison

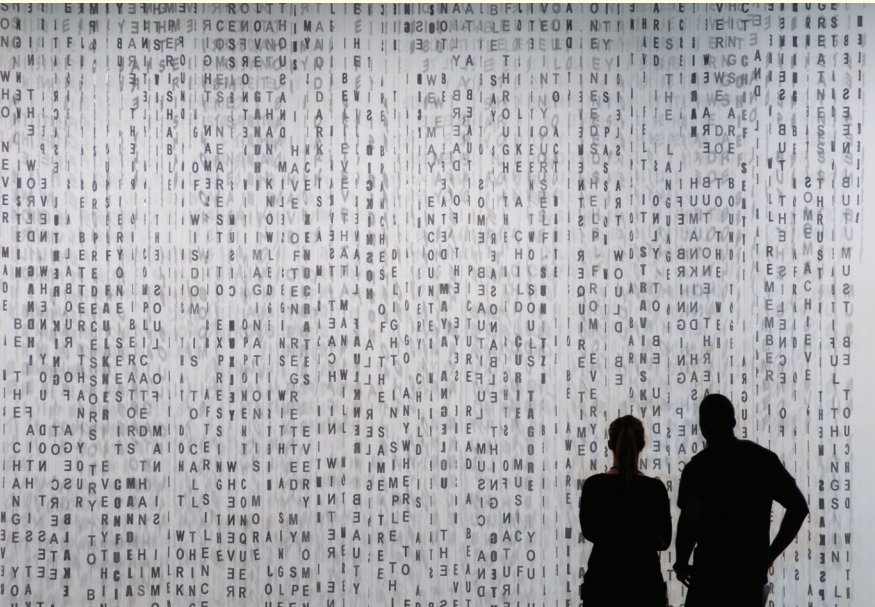
Fellows are exposed to both general and specialty consultation-liaison clinics throughout the year. One half-day per week is spent in the Psychosomatic Clinic, where fellows see follow-up patients from the inpatient CL service, pre-operative referrals for high-utilizing patients or patients with significant psychiatric pathology, second opinion cases, and referrals from specialty clinics. Fellows spend another half-day rotating through immersion specialty clinics, including: cardiology, transplant, multiple sclerosis, epilepsy, movement disorders, women’s health, psycho-oncology and HIV. Fellows will then refine their expertise by spending the final four months in a single specialty immersion clinic.

Didactics and Conferences

Weekly conferences include: case conference, journal club, psychiatry grand rounds and psychosomatic didactics.

Research

Fellows will have one month of dedicated research time split into two 2-week blocks during the year. Our fellows have presented their research locally, regionally and nationally, including poster, oral and workshop presentations at the Cleveland Consultation Liaison Society, American Psychiatric Association and Academy of Psychosomatic Medicine annual meetings.







**Program Director**

Kathy Coffman, MD, FAPM, is Board Certified in Psychosomatic Medicine, Geriatric Psychiatry, and Addiction Psychiatry. She has published and edited for various journals including Psychosomatics and Current Opinion in Organ Transplantation.



**Section Head, CL Psychiatry**

Leo Pozuelo, MD, FACP, FAPM, is Board Certified in Psychosomatic Medicine, Psychiatry and Internal Medicine. He also serves as the Clinical Vice Chair of the Department of Psychiatry and Psychology at the Cleveland Clinic.

**Program Overview**

- Cardiology** Leo Pozuelo, MD
- Epilepsy** George E. Tesar, MD
- Ethics** Xavier Jimenez, MD
- HIV** Michael Rosas, MD
- Medical Outcomes** Adele Viguera, MD
- Movement Disorders** Mayur Pandya, DO
- Multiple Sclerosis** Elias Khawam, MD
- Pain Management** Ed Covington, MD
- Psycho-Oncology** Isabel Schuermeyer, MD
- Psycho-Oncology** Laurel Ralston, DO
- Regional CL** Syma Dar, MD
- Regional CL** Lara Feldman, DO
- Transplant** Kathy Coffman, MD
- Trauma** Related Disorders Margo Funk, MD
- Women’s Health** Lilian Gonsalves, MD
- Social Work** Karen E. Salerno, MSSA, LISW-S
- CL Coordinator** Tracy Sluka

**How to Apply**

The Psychosomatic Medicine program is one-year in length and offers 2 positions annually. All positions are offered through the National Residency Match Program (NRMP) [www.nrmp.org](http://www.nrmp.org) as part of the Psychiatry Fellowship Match. All applicants must have successfully completed an ACGME-accredited Psychiatry Residency in the United States or an RCPSC-accredited Psychiatry Residency in Canada.

For a comprehensive guide to the Psychosomatic Medicine Fellowship Match process, please visit the Academy of Psychosomatic Medicine website. <http://www.apm.org/career/pm-fship-candidate-info.pdf>

Interested applicants must provide the following documentation:  
Application Form available via the link:  
<http://portals.clevelandclinic.org/Portals/75/Documents/application.pdf>

- Curriculum Vitae
- Personal Statement
- Letter from Residency Program Director
- At least 2 letters of recommendation from physicians who have supervised you in a clinical setting
- USMLE/COMLEX Score Reports
- Medical School Diploma
- Certified copy of your currently valid ECFMG certificate (applicable for International Medical Graduates only)

**Important Dates:**

August: In the year prior to matriculation into the program, applicants may begin submitting applications  
September – November: Interviews at Cleveland Clinic  
November: Meet our Faculty at the Annual Meeting of the Academy of Psychosomatic Medicine  
November 24: Last possible date to submit applications to Cleveland Clinic  
Mid-December: NRMP Rank Order List Deadline  
Early-January: Match Day

**Please email all application materials to Megan Poeschl, Psychosomatic Medicine Program Coordinator, [poeschm@ccf.org](mailto:poeschm@ccf.org)**

**Visa Sponsorship** The Cleveland Clinic sponsors H1-B and J-1 visas.



# Compensation and Benefits

**Health Insurance** | The Cleveland Clinic Foundation will provide Cleveland Clinic Health Insurance Plan at no cost to you and your eligible dependents. Other plans are also be available. Free on-campus gym membership or Curves membership.

**Disability Insurance** | (LONG TERM) Paid for by the Cleveland Clinic Foundation for Residents/Fellows in Clinical Training Programs. Guaranteed issue, portability, HIV stance.

**Pharmaceuticals** | Prescription drug benefits are determined by the health plan chosen. All health plans have a deductible, co-pay or both for prescription medication.

**Dental Care Plan** | The Cleveland Clinic Foundation offers a choice of three (3) plans provided at no cost to all Residents/Fellows and their eligible dependents after completing 12 months of training. Coverage during the first year of training may be purchased.

**Vision Plan** | Residents/Fellows of CCF may purchase the vision plan for you and your eligible dependents. This plan is a materials-only plan which provides savings on prescription eyewear. (Note: routine eye exams are covered through your health plan).

**Life Insurance** | \$25,000 term group policy.

**Loans** | \$1,200 interest free loan is available to all house staff who receives a salary from the Cleveland Clinic Foundation.

**Malpractice Insurance** | Paid by The Cleveland Clinic Educational Foundation, includes tail coverage. Limited to activities within the training program.

**Time Away** | Fellows are provided the opportunity to attend national meetings to present their research, with full financial support from the department.

- Vacation: 3 weeks (15 paid working days)
- Maternity: 6 weeks-paid leave for natural childbirth or adoption; 8 weeks for cesarean section.
- Paternity: 2 weeks paid leave (10 working days). Additional time off unpaid up to a maximum of 12 weeks under FMLA.

**Library** | The 30,000 square foot library facility offers the following services: Reference assistance, Medline searches, electronic resources (may also be available from outside the library) and a Learning Resource Center (Audiovisual materials, computers, Interlibrary Loans).

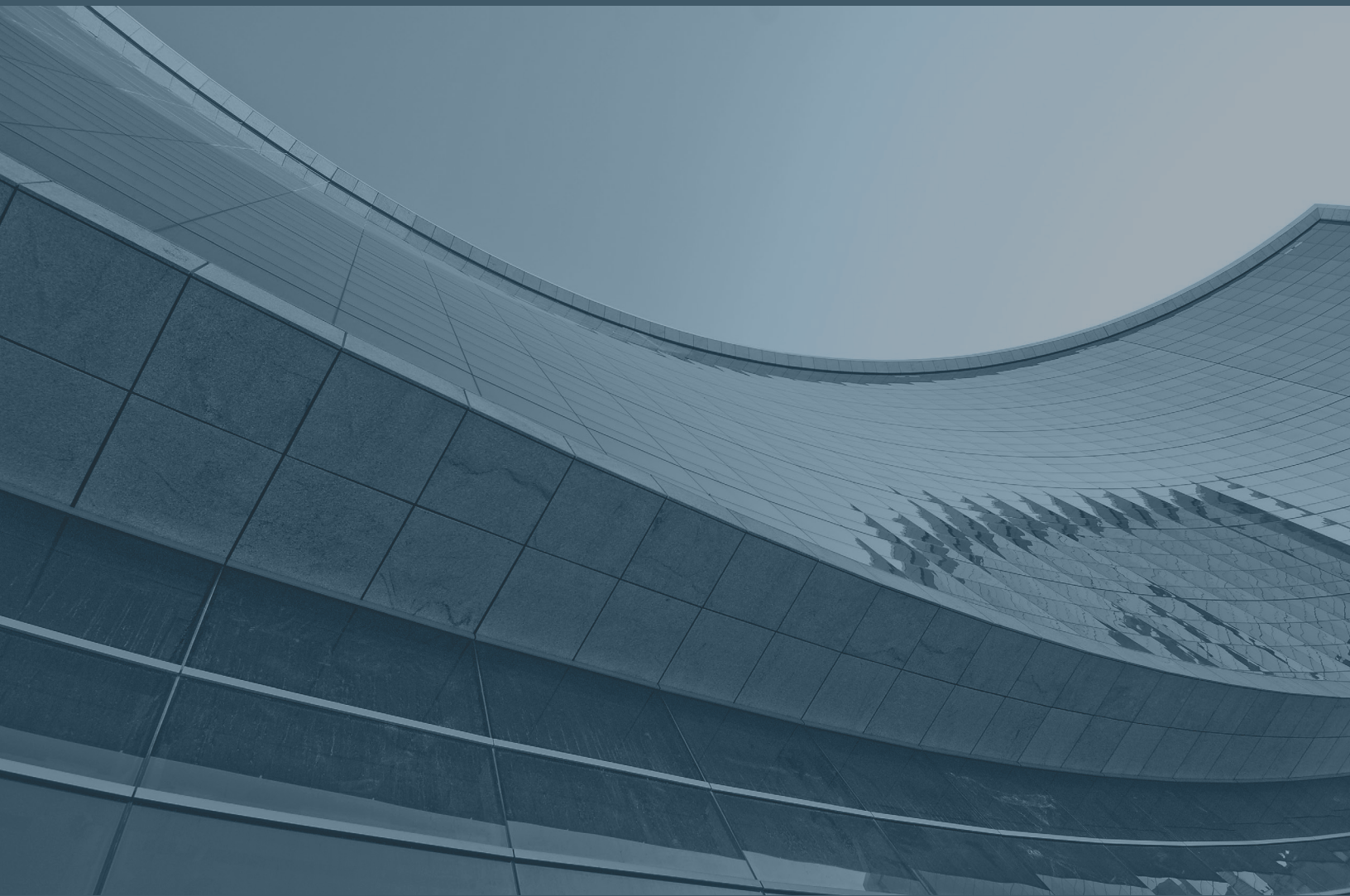
**Social Activities** | Annual Trainee-Faculty Welcome Picnic, free events sponsored by Cleveland Clinic House Staff Association and House Staff Spouse Association

## New House Staff Resource Center

Opened in July 2014 and designed for trainee use only, this 4,000 square foot space is located in the hub of the main campus near the cafeteria, Au Bon Pain and Starbucks. The space includes dedicated conference rooms for transitions of care and teaching rounds, 100 computers, independent study carrels, day lockers, a lounge with coffee maker and water cooler and several large screen LCD displays.







## Contact Information

**Kathy Coffman, M.D.**

Program Director  
9500 Euclid Avenue P57  
Cleveland, OH 44195

**Megan Poeschl**

Fellowship Coordinator  
email: [poeschm@ccf.org](mailto:poeschm@ccf.org)  
Phone: 216-444-2945