

**Ashley Tewksbury, PharmD,  
RPh, BCPP**

Clinical Specialist I– Pharmacy

Lutheran Hospital  
1730 West 25th Street  
Cleveland, Ohio 44113

Telephone: 216.363.2359  
Fax: 216.363.7499  
E-mail: TEWKSBA@ccf.org

**Education:**

- ♦ Doctor of Pharmacy, Northeastern University, Boston, Massachusetts
- ♦ PGY1 Pharmacy Practice Residency, Community Health Network, Indianapolis, Indiana, 2013-2014
- ♦ PGY2 Behavioral Care Pharmacy Residency, Community Health Network/Butler University, Indianapolis, Indiana, 2012-2013

**Areas of Interest:**

- ♦ Schizophrenia
- ♦ Autism Spectrum Disorder
- ♦ Treatment-Resistant Depression
- ♦ Medication Safety

**Research/Current Projects:**

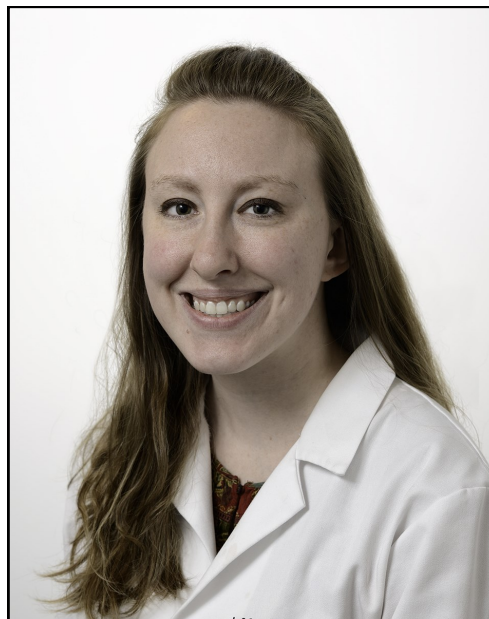
- ♦ Contribute to multidisciplinary treatment rounds on adult mood disorders and psychosis units
- ♦ Provide patient medication education groups daily for behavioral health patients

**Service:**

- ♦ Peer reviewer- The Mental Health Clinician, Journal of Dietary Supplements, The Annals of Pharmacotherapy, Natural Standard Research Collaboration, Indiana Pharmacists Alliance
- ♦ Member- Cleveland Clinic Pharmacy Clinical Integration Committee
- ♦ Member- Cleveland Clinic Pharmacy and Therapeutics Committee, Neurosciences Specialty Panel
- ♦ Member- Cleveland Clinic Medication Safety Sub-Team (Enterprise Falls Committee)
- ♦ Member- Lutheran Hospital Psychiatry Quality Enhancement Committee
- ♦ Member- American Society of Health-System Pharmacists
- ♦ Member- College of Psychiatric and Neurologic Pharmacists

**Teaching:**

- ♦ Preceptor– Lutheran Hospital IPPE, APPE students and Fairview Hospital PGY1 residents



- ♦ Instructor- Cleveland Clinic Adult Psychiatry Residency Program
- ♦ Weekly topic discussions for medical students from Case Western Reserve University and Cleveland Clinic Lerner College of Medicine

**Poster Presentations:**

- ♦ Development of collaborative drug therapy management (CDTM) and clinical pharmacy services in an outpatient psychiatric clinic. Poster presented at: CPNP Annual Meeting; 2014 April; Phoenix, AZ and ASHP Midyear Clinical Meeting; 2013 Dec; Orlando, FL
- ♦ Concurrent use of oral paliperidone or risperidone among patients prescribed paliperidone palmitate long-acting injectable. Poster presented at: ASHP Midyear Clinical Meeting; 2012 Dec; Las Vegas, NV.
- ♦ Description of collaborative drug therapy management implementation in a community health center in Massachusetts. Poster presented at: MSHP 2012 Annual Meeting; 2012 April; Newton, MA.

**Publications:**

- ♦ Gören JL, Tewksbury AT. Chapter 3: Drug Interactions and Polypharmacy. In: Ritsner MS, ed. *Polypharmacy in Psychiatric Practice, Volume I: Multiple Medication Use Strategies*. New York, NY: Springer; 2013:45-74.
- ♦ Conquer J, Culwell S, Curtiss W, Isaac R, Izuchi N, Rusie E, Shaffer M, **Tewksbury A**, Windsor RC, Wortley J. Docosahexaenoic acid (DHA) professional monograph. Natural Standard Research Collaboration. Cambridge, MA. 2014