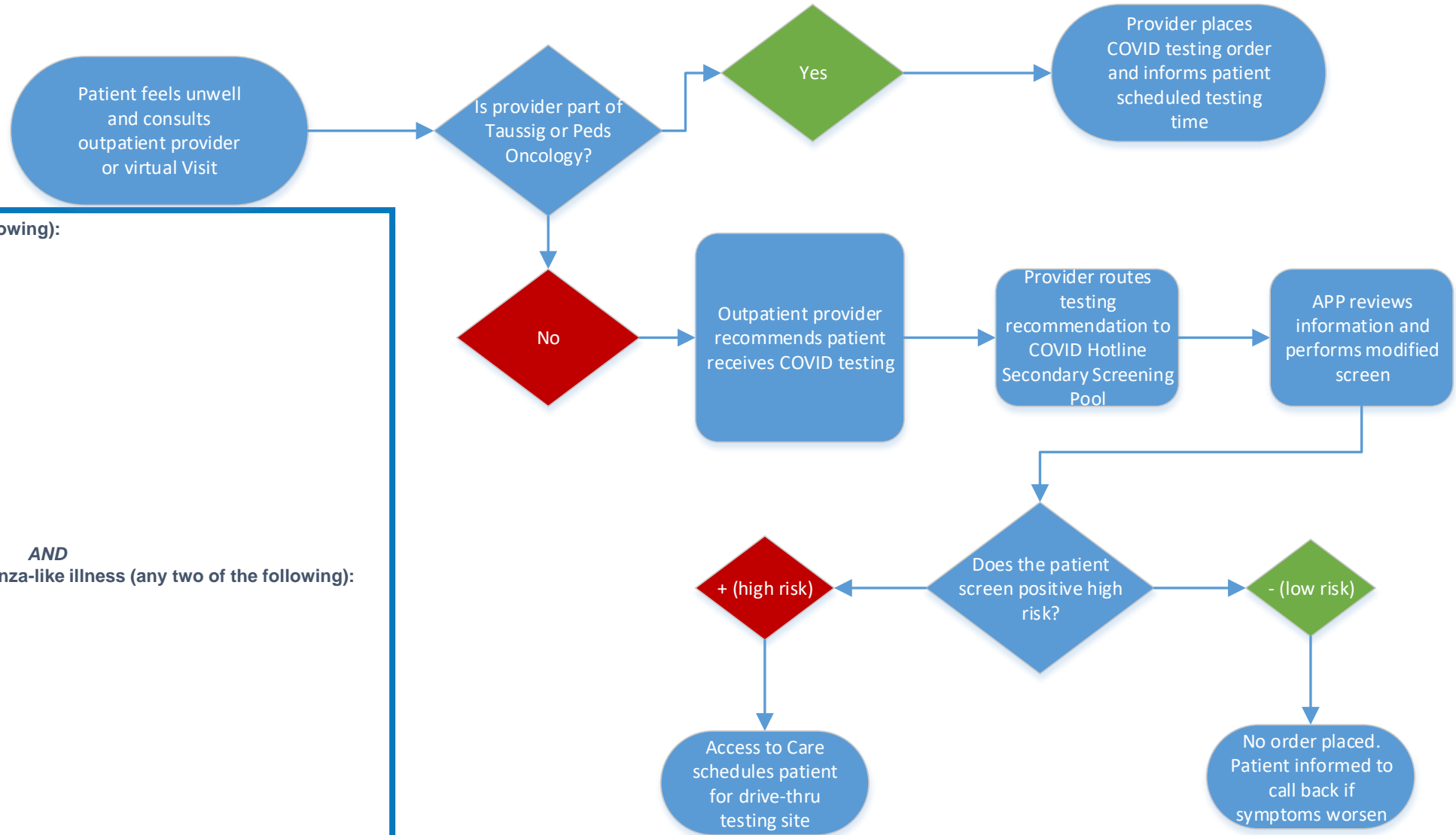


Patient Workflow Overview



High risk patients (any of the following):

- Age > 60 or <3 years old
- Active immunosuppression
- Active cancer
- ESRD on dialysis
- Diabetes
- HTN
- CAD
- HF reduced EF
- Chronic lung disease
- HIV/Aids
- Organ transplantation
- Known COVID-19
- Morbid obesity (BMI >40)
- Pregnancy

AND

Symptoms consistent with influenza-like illness (any two of the following):

- Fever (>100.4)
- Cough
- Myalgia
- Shortness of breath
- Diarrhea
- Headache
- New loss of taste or smell
- Sore throat
- Congestion or runny nose
- Nausea or vomiting