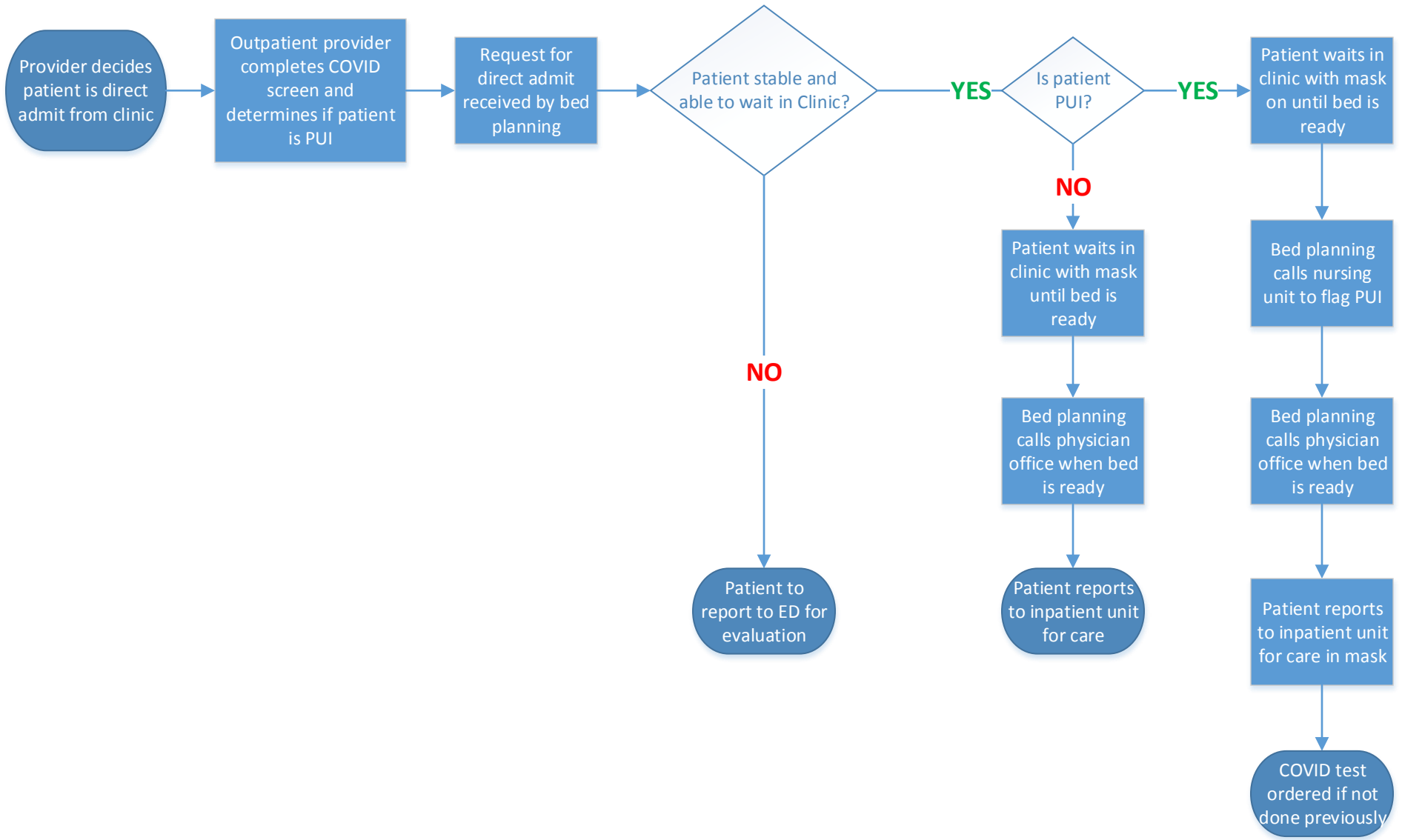


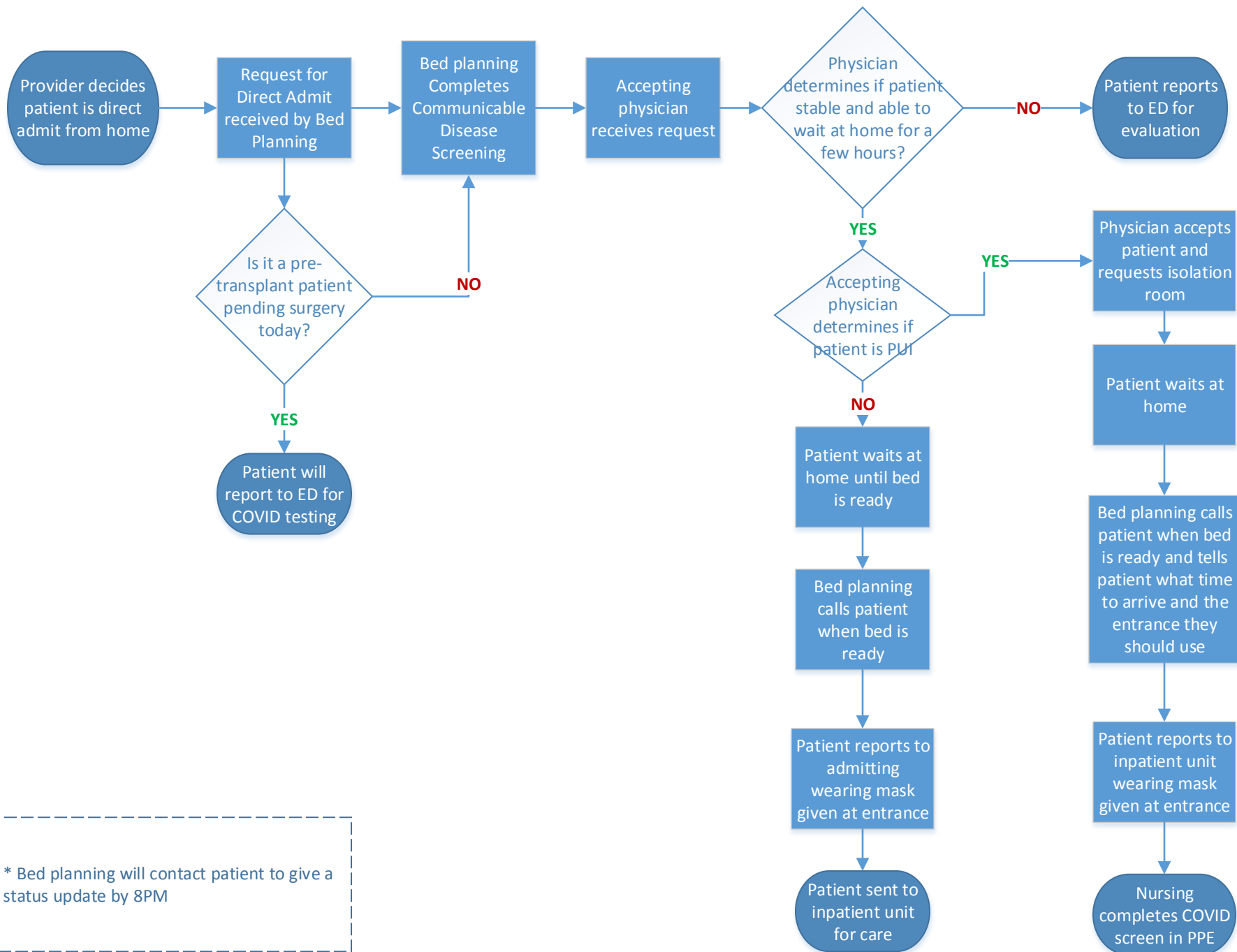
All Direct Admits from Clinic



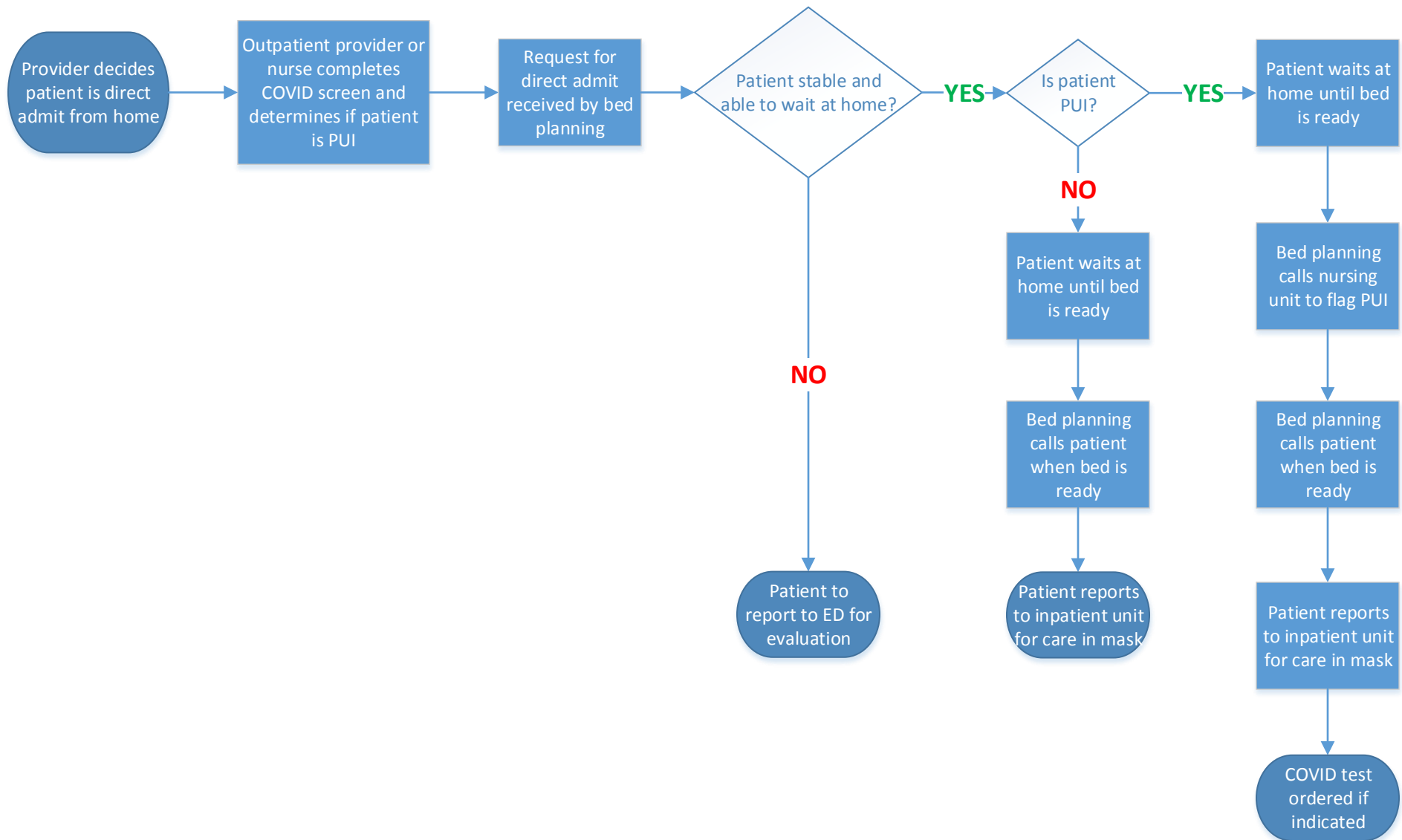
When clinics/office are closed:

- Patient will report to ED and receive mask
- Patient will identify themselves as a direct admit

All Direct Admits from Home *(does not include Taussig)*



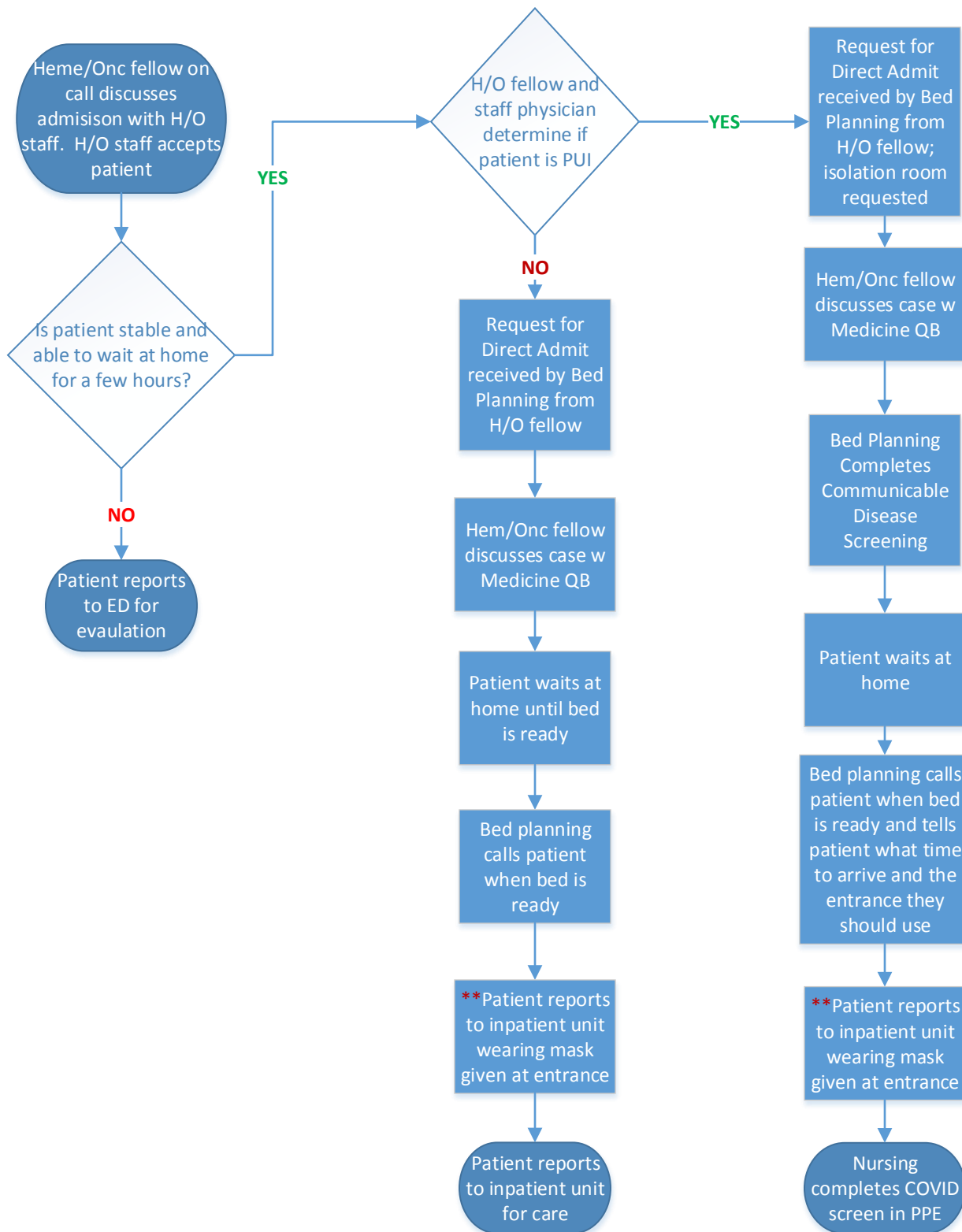
Taussig Direct Admits from Home (During Office Hours)



When clinics/office close:

- Patient will report to ED
- Patient will identify themselves as a direct admit

Taussig Direct Admits from Home After Hours Main Campus



**** If patient has neutropenic fever:**

- Nursing calls QB and heme/onc fellow on call as soon as patient reaches the inpatient unit
- QB or on-call h/o fellow initiate NTP fever protocol