

## Review Article

# The Chronic Inflammatory Hypothesis for the Morbidity Associated with Morbid Obesity: Implications and Effects of Weight Loss

Daniel R. Cottam, MD<sup>1,2</sup>; Samer G. Mattar, MD<sup>1,2</sup>; Emma Barinas-Mitchell, PhD<sup>1</sup>; George Eid, MD<sup>2</sup>; Lewis Kuller, MD, DrPH<sup>1</sup>; David E. Kelley, MD<sup>1</sup>; Philip R. Schauer, MD<sup>1,2</sup>

<sup>1</sup>Obesity and Nutrition Research Center, and <sup>2</sup>Minimally Invasive Surgery Center, Department of Surgery, The University of Pittsburgh Medical Center, Pittsburgh, PA, USA

**Background:** Obesity is a worldwide pandemic that causes a multitude of co-morbid conditions. However, there has been slow progress in understanding the basic pathophysiology that underlies co-morbid conditions associated with obesity. Recently, there has been intense interest in the role of inflammation in obesity. Using the inflammatory hypothesis, many of the mechanisms by which co-morbid conditions are associated with obesity are being elucidated.

**Methods:** We searched the literature and reviewed all relevant articles. We focused on hormones and cytokines that have been associated with other inflammatory conditions such as sepsis and systemic inflammatory response syndrome.

**Findings:** Angiotensinogen (AGT), transforming growth factor beta (TGF $\beta$ ), tumor necrosis factor alpha (TNF $\alpha$ ), and interleukin six (IL-6) are all elevated in obesity and correlate with several markers of adipocyte mass. These mediators have detrimental effects on hypertension, diabetes, dyslipidemia, thromboembolic phenomena, infections, and cancer. Weight loss results in a reduction of inflammatory mediators and a diminution of the associated co-morbid conditions.

**Conclusions:** The success of weight loss surgery in treating the complications associated with obesity is most probably related to the reduction of inflammatory mediators. While some aspects of bariatric physiology remain unclear, there appears to be a strong

association between obesity and inflammation, thereby rendering obesity a chronic inflammatory state. A clearer understanding of the physiology of obesity will allow physicians who treat the obese to develop better strategies to promote weight loss and improve the well-being of millions of individuals.

**Key words:** Obesity, morbid obesity, inflammation, angiotensin, hypertension, leptin, tumor necrosis factor, transforming growth factor, interleukin, insulin resistance, infection, cancer, C-reactive protein, serum amyloid A

## Introduction

Obesity, defined as a BMI  $>30$  kg/m<sup>2</sup>, is a global epidemic that currently affects over 185 million adults in industrialized nations, 115 million in the developing world and over 18 million children under the age of five.<sup>1,2</sup> Patients who have a BMI  $>25$  are considered overweight, while a BMI  $>30$  is considered obese, and a BMI  $>40$  is considered morbidly obese. In the US,  $>27\%$  of the population is currently obese, with over half of the population being overweight. There are approximately 260,000 to 380,000 deaths a year from factors related to obesity in the US.<sup>3</sup> This exceeds the aggregate totals of lung (154,000), colon (48,000), breast (40,000) and prostate (30,200) cancer combined.<sup>4</sup> The BMI has

Reprint requests to: Samer G. Mattar, MD, Magee Women's Hospital, Suite 5500, 300 Halket Street, Pittsburgh, PA 15213, USA. Fax: 412-641-3680; e-mail: danamycdtam@yahoo.com

served as a useful clinical tool in the evaluation of obesity and the appropriateness of patients for surgery. However, as a measure of total fatness, the BMI measurement fails because it underestimates the total amount of fat in females (females have more fat mass than men at similar BMIs) and overestimates fat mass in muscular men.<sup>5,6</sup> A potentially useful addition to the appraisal of health risks of obesity would be biologic markers that assess the amount of excess inflammation.

Recently there has been rising interest in the role of inflammation in the morbidly obese. C-reactive protein (CRP), an acute phase reactant, has undergone intense investigation. Its elevation corresponds to the level of adiposity present in the body.<sup>5,7,8</sup> Additionally, this protein functions as a valuable tool to predict future cardiovascular events such as ischemic stroke, coronary heart disease, myocardial infarction, peripheral arterial disease, and mortality in men and women.<sup>9-11</sup> Yet, this protein plays only a small role in the acute phase response.<sup>11</sup> The acute phase response was associated with at least 45 different proteins and an extended list of associated phenomena.<sup>11</sup> We can draw meaningful conclusions from the data already present in the literature. Using a model of an increased adipocyte mass functioning as an endocrine organ, we can gain further insights into the dyslipidemic, oncologic, infectious, diabetic, hypertensive, and thromboembolic phenomena that plague morbidly obese patients. Additionally, we may gain insight as to why weight loss surgery is successful in reversing the complex metabolic phenomena associated with obesity.

## Adipose Tissue as an Endocrine Organ

Until recently, it was accepted that the role of the adipocyte was the passive storage of energy in the form of white fat, or of brown fat for thermogenesis. The function of these cells was thought to be the release of fatty acids in times of starvation or the production of heat in times of cold, respectively. However, with the explosion of obesity-related research, it has become clear that fat cells actively monitor their environment, and vigorously respond to neural, paracrine, autocrine and endocrine inputs. These inputs include a wide array of steroids,

cytokines, prostaglandins, cholesterol, and fatty acids (Table 1).<sup>12-36</sup> It has also become clear that the adipocyte produces numerous secretions. While it is beyond the scope of this paper to investigate all secretions of the adipocyte, we can review those that are implicated in initiating the chronic inflammatory response that is associated with obesity (Table 2).<sup>37-61</sup> The most notable inflammatory mediators released by the adipocyte are angiotensinogen (AGT), transforming growth factor beta (TGF $\beta$ ), tumor necrosis factor alpha (TNF $\alpha$ ), and interleukin six (IL-6).

## Angiotensinogen

AGT is a 60 Kd protein originally thought to be produced in significant amounts only in the liver.<sup>62</sup> This protein, which does not possess any independent biological activity, is the first step in the renin-angiotensin system. Renin cleaves AGT to produce angiotensin I which has little biologic activity. Next, Angiotensin I is cleaved by angiotensin-converting enzyme (ACE) in the lung, to produce angiotensin II. Angiotensin II creates a system of biologic actions as will be described later. The main feature of this system is the regulation of blood pressure in the face of dehydration or hypovolemic shock.<sup>63</sup> One of the early responses to declining renal perfusion is the hepatic production of AGT.<sup>64</sup> The production of AGT in response to inflammation and shock has led to its recognition as an acute phase protein.<sup>65,66</sup> However, when the renin-angiotensin system becomes dysfunctional, as in renovascular occlusive disease, it manifests itself as hypertension.<sup>63</sup>

Recently, a significant elevation of angiotensinogen levels has been shown to correlate directly with leptin levels (a marker of adipocyte mass) and BMI.<sup>67-71</sup> These high levels are not caused by an overproduction of AGT from the liver, as indicated by the positive correlation between BMI and subcutaneous adipocyte angiotensinogen mRNA expression.<sup>72</sup> However, the overproduction of angiotensin is not, by itself, important, since it and its metabolite angiotensin I are both inactive proteins. These proteins are acted on by renin and angiotensin converting enzyme, which have both been shown, using

**Table 1.** Known endocrine hormones and secretions by adipose tissue

Molecule	Function/Effect	Reference
ASP	Promotes fat storage, inhibits lipolysis	12
Adipsin	Helps cleave the complement protein C3 into C3a and C3b ultimately to produce ASP	13
Adiponectin	Reduces hepatic glucose production while increasing muscle glucose utilization	12
Adipophilin	deposition and transport of cytosolic lipid droplets	14
Agouti protein	Regulation of energy homeostasis	15
Angiotensinogen	Regulator of blood pressure precursor of angiotensin II	16
Apo-E	Transport of cholesterol and other lipids between peripheral tissues and the liver	17
CETP	Facilitates the transfer of cholesteryl ester from HDL to apolipoprotein B-containing lipoproteins	18
FIAF	Regulation of metabolism, especially under fasting conditions	19
IL-1a	Regulation of fever and body heat	20
IL-6	Host defense, glucose and lipid metabolism	21
IL-6 sR	Augments the activity of IL-6	22
IGF-1	Stimulates cellular proliferation and mediates growth hormone	22,23
Leptin	Signals brain about adipose stores, energy expenditure	24
LPL	Hydrolyzes triglycerides VLDLs to free fatty acids for uptake into adipocytes	25
Metallothionein	Protection of fatty acids from oxidative damage	26
MIF	Immunoregulation and inflammation	27
NEFA	Elevated levels impair glucose uptake and increase liver gluconeogenesis	28
PAI-1	Regulation of the fibrinolytic system	29
PGI2	vasorelaxation and inflammation	
PGF2a	Smooth muscle constriction, adipocyte differentiation	30
Resistin	Unknown	31
Retinol	Adipocyte is storage depot for Vitamin A	32
Retinol BP	Carrier protein for retinol	33
Steroids	Metabolism and secretion of sex steroids and glucocorticoids	34
TGFb	Controls PAI-I synthesis, cell growth and differentiation	35
TNFa	Partially responsible for insulin resistance in diabetes	36
TNFa sR-I	Autocrine and paracrine mediator of TNF	36
TNFa sR-II	Autocrine and paracrine mediator of TNF	36

Acylation stimulating protein (ASP), Adipsin, Adiponectin, Adipophilin, AdipoQ, Agouti protein, Angiotensinogen, Angiotensin II, Apolipoprotein E (Apo-E), Cholesteryl ester transfer protein (CETP), Fasting-induced adipose factor (FIAF), IL-1a interleukin 1 alpha, IL-6 (interleukin 6), IL-6 sR (interleukin 6 soluble receptor), Insulin-like growth factor-1 (IGF-1), Leptin, Lipoprotein lipase (LPL), Metallothionein, Macrophage inhibitory factor (MIF), Non-esterified fatty acids (NEFA), Plasminogen activator inhibitor-1 (PAI-1), PGI2 prostacylin, PGF2a, Resistin, Retinol, Retinol binding protein (Retinol BP), Steroids, TGFb (Transforming growth factor-b), Tissue factor, TNFa (Tumor necrosis factor a), TNFa sR-I (Tumor necrosis factor soluble receptor I), TNFa sR-II (Tumor necrosis factor soluble receptor II)

mRNA expression techniques, to be active in human adipocytes. Additionally, the activity of these plasma mediators has been positively correlated with BMI and decline dramatically with moderate amounts of weight loss.<sup>73-80</sup> The end result is an overexpression of angiotensin II in obesity.

These findings would suggest that the metabolic effects of angiotensin II are important in obesity.

Several authors have demonstrated that overproduction of aldosterone in obesity positively correlates with BMI,<sup>76,77,81,82</sup> and that obesity is associated with volume expansion and sodium retention, even in moderate levels of obesity.<sup>74,82-85</sup> In addition, the direct effects of angiotensin II on the sympathetic nervous system could be a cause of essential hypertension.<sup>86,87</sup> Masuo et al<sup>86</sup> followed 1,897 lean men

**Table 2.** Acute Phase reactants and inflammatory mediators in obesity, trauma, and ARDS

Inflammatory Marker	ARDS/ Trauma	Obesity	Weight Loss	References
<b>Cytokines</b>				
IL-1 $\alpha$	↑	↑	?	37-39
IL-1 $\beta$	↑	↑	↓	37, 40
IL-1RA	↑	↑	↓	37,40-41
IL-3	↑	↑	↓	37,42
IL-6	↑	↑	↓	37, 43
IL-8	↑	↑	↑	37, 44-45
TNF-	↑	↑	↓	37, 42
TNFsRA	↑	↑	?	37, 46
TGFbeta	↑	↑	?	37, 47
<b>Acute Phase Proteins</b>				
Compliment C3	↑	↑	↓	37,48
Haptoglobin	↑	↑	↓	37, 48
CRP	↑	↑	↓	37, 49-50
Fibrinogen	↑	↑	↓	37, 51-52
Serum amyloid A	↑	↑	↓	37, 53
Ceruloplasmin	↑	↑	?	37, 54
a1-anti-chymotrypsin	↑	↑	?	37, 55
LBP	↑	↑	?	56
AGP	↑	↑	?	56
PAI-1	↑	↑	↓	37, 51-52
<b>Cell Surface Receptors</b>				
CD14	↑	↑	↓	57-58
CD14/CD16*	↑	↑	↓	57-58
CD62	↓	↓	↑	58-59
CD95	↑	↑	↓	59
<b>Other</b>				
vWF	↑	↑	↓	62
FVIII	↑	↑	↓	62
ESR	↑	↑	↓	60, 61

Lipopolysaccharidebinding protein (LBP), a-Acid glycoprotein (AGP), CD95 (Fas Antigen), Plasminogen activator inhibitor-1 (PAI-1), Transforming growth factor-b (TGFb), Tumor necrosis factor a (TNFa), Tumor necrosis factor soluble receptor (TNFsRA), Von Willebrands Factor vWF, Acute respiratory distress syndrome (ARDS)

\*CD14/CD16 monocyte subset responsible for production of cytokines

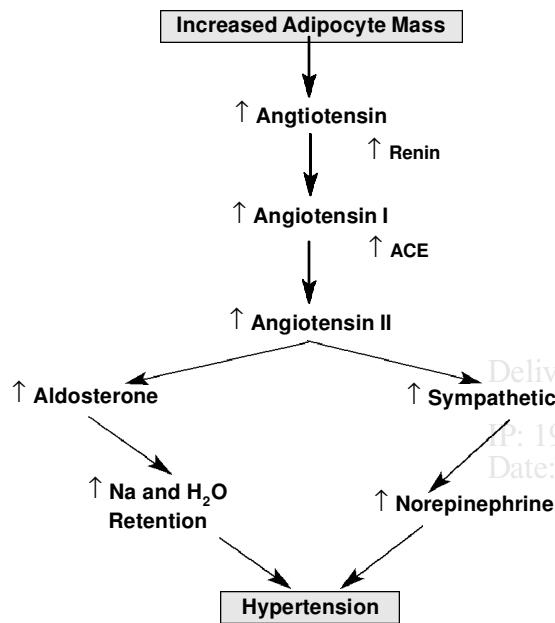
over 10 years and found that plasma norepinephrine (NE) levels increased as BMI increased. The increase in NE levels directly correlated with rising blood pressure. The relative contribution between aldosterone-induced sodium retention and sympathetic over-activity in obese patients with hypertension still has to be elucidated (Figure 1).

## Tumor Necrosis Factor Alpha and Transforming Growth Factor Beta

TNF $\alpha$  is one of the cardinal cytokines that mediate immune and inflammatory responses. It was origi-

nally thought to be produced only by macrophages and monocytes, and these cells continue to be heavily investigated.<sup>88,89</sup> This is partly due to the strong association of TNF $\alpha$  with trauma, acute respiratory distress syndrome, multiple organ system failure, systemic inflammatory response syndrome (SIRS), septic shock and death.<sup>90-93</sup> It has also been associated with apoptosis and the procoagulant state present in conditions of excess inflammation.<sup>89,94,95</sup> Large amounts of TNF $\alpha$  are also present in obesity.

TNF $\alpha$  in obesity is produced by adipocytes throughout the body as seen in mRNA studies, but more abundantly by adipocytes in the waist-hip region.<sup>96</sup> This is manifested as a mild correlation of serum TNFa with BMI, but strong correlation with



**Figure 1.** This figure illustrates the relationship between increased adipocyte mass, aldosterone and sympathetic tone as causes of hypertension in obesity.

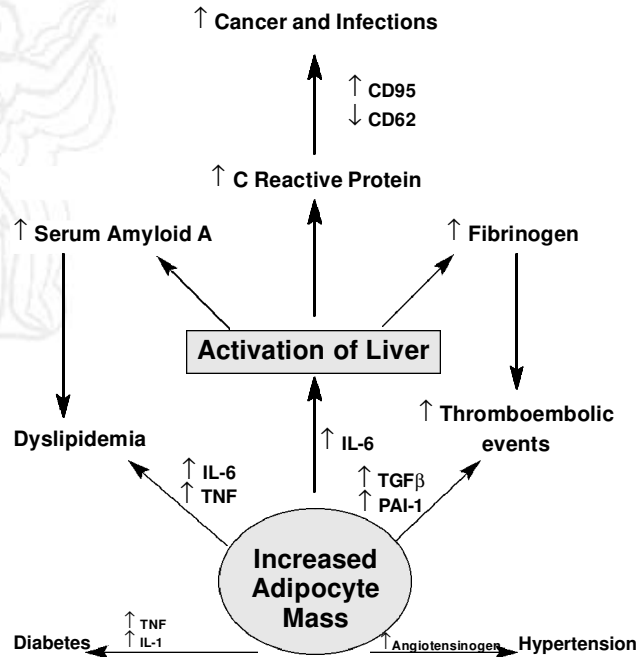
waist-hip ratio. (The waist is measured at the narrowest point of the relaxed stomach while the hips are measured on the widest place).<sup>96,97</sup> Both the adipocyte mRNA expression and serum TNF $\alpha$  levels are elevated in obesity and concurrently decrease with weight loss.<sup>96,100</sup>

In trauma and other inflammatory conditions, TNF $\alpha$  is associated with several abnormalities in the hemolytic and fibrinolytic system. The abnormalities include increases in the serum levels of von Willebrand factor (vWF) and plasminogen activator inhibitor (PAI-1).<sup>89,101-104</sup> In obesity, vWF correlates with BMI and waist circumference and decreases with weight loss.<sup>61,97,105</sup> Levels of TNF expression also correlate with serum levels of vWF.<sup>97</sup> While the exact mechanism has yet to be elucidated, it may be presumed that TNF $\alpha$  mediates vWF expression in obesity, in keeping with other states of chronic inflammation.

Serum levels of PAI-1, as with vWF, have also been found to correlate with TNF.<sup>29,47,97,106-109</sup> Unlike vWF, which is produced in the liver, PAI-1 is produced by the adipocyte. TNF can directly induce the production of PAI-1,<sup>106,107,110,112</sup> or it can influence its production through a TGF- $\beta$  mediated pathway.<sup>47,107-109,112,113</sup> TGF $\beta$  is elevated in inflam-

matory states,<sup>89</sup> and levels of TGF $\beta$  positively correlate with BMI.<sup>47,107</sup> With weight loss, both TGF $\beta$  and PAI-1 levels fall significantly.<sup>50,61,105,114,115</sup> This may explain why chronic inflammation in obesity predisposes morbidly obese individuals to higher rates of thromboembolic phenomena.

Another relationship seen in acute inflammation and obesity is insulin resistance secondary to TNF $\alpha$ . There are many lines of evidence to support this hypothesis. TNF $\alpha$ , has been shown to induce insulin resistance in isolated cells, animals, and humans.<sup>116-119</sup> Also, medication and dietary modifications improve insulin sensitivity, and this coincides with a decrease in TNF $\alpha$  and weight loss.<sup>120-127</sup> The precise mechanism is related to TNF $\alpha$  receptor expression, as obese mouse models lacking either TNF $\alpha$  or its receptors do not exhibit significant insulin resistance.<sup>128-130</sup> TNF $\alpha$  almost certainly plays a large part in obesity-associated insulin resistance (Figure 2). Future studies will investigate how much other insulin mediators that are elevated in obesity and decrease with weight loss such as enteroglucagon (glucagonlike peptide 1 [GLP-1]), and IL-1 (another acute phase reactant), interact with TNF $\alpha$ .<sup>40,131-132</sup>

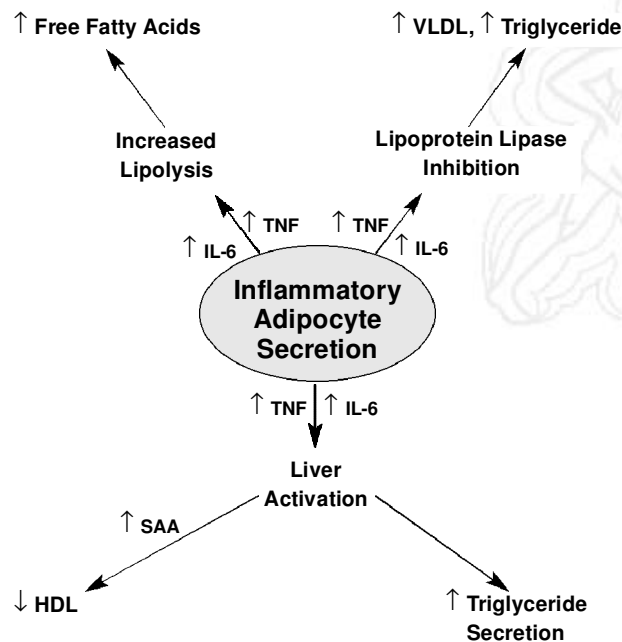


**Figure 2.** This figure demonstrates the effect of increased adipocyte mass in liver activation, as well as the possible mechanisms for increased cancer incidence, thrombotic events, hypertension, diabetes and dyslipidemia seen in obesity.

## TNF and IL-6

In addition to inducing the production and secretion of TGF $\beta$ , TNF $\alpha$  also induces the secretion of IL-6.<sup>89,133-135</sup> IL-6 levels are elevated in obesity and correlate with the level of TNF $\alpha$ , waist-hip ratio (WHR) and BMI, and fall with weight loss.<sup>43,97,136-138</sup> These two cytokines, in conjunction, are responsible for the dyslipidemia that is common in morbid obesity. Specifically, both IL-6 and TNF $\alpha$  correlate with the level of dyslipidemia,<sup>137,138</sup> inhibit lipoprotein lipase (increasing VLDL and triglycerides),<sup>96,133,139-141</sup> increase triglyceride secretion from the liver,<sup>139,142</sup> and increase lipolysis (increasing free fatty acids),<sup>139-142</sup> while TNF $\alpha$  alone stimulates hormone sensitive lipase, and down-regulates fatty acid binding protein and fatty acid synthase.<sup>133,140</sup> All of these changes in lipid metabolism are reversible with weight loss (Figure 3).<sup>96,137,143-145</sup>

Perhaps the most important aspect of IL-6 physiology is its induction of the acute phase response by the liver. The liver is responsible for the production of many of the acute phase proteins seen in trauma



**Figure 3.** In obesity, the inflammatory mediators TNF and IL-6 are thought to be responsible for many of the alterations in lipid metabolism. The decreased levels of HDL with elevated levels of triglycerides and VLDL could contribute to the higher incidence of cardiovascular disease seen in obesity.

and sepsis. The most studied of these proteins are C-reactive protein (CRP), serum amyloid A (SAA), and fibrinogen.

CRP is a member of the pentraxin family of proteins and is secreted by the liver in response to IL-6 production in trauma, sepsis and other inflammatory conditions.<sup>146-148</sup> It rises quickly in the face of inflammation and falls quickly with its resolution. It binds to Fc receptors to induce the secretion of pro- and anti-inflammatory cytokines, and to help the phagocytosis of bacteria. CRP activates complement, and down-regulates white blood cells adhesive molecules in response to sepsis and systemic inflammation.<sup>149-152</sup> In morbid obesity, the level of CRP is positively correlated with the waist ratios, hip-waist ratios, and BMI. This relationship is unchanged in both “healthy” obese patients and in general population studies of adults and children.<sup>5,7-8,43, 49</sup> With exercise and weight loss, the levels of CRP fall dramatically.<sup>8,43,49,138</sup> Additionally, many of the same effects seen in trauma secondary to elevated levels of CRP, such as elevated cytokine levels, decreased expression of cell surface adhesive molecules, and increased expression of death receptors (apoptotic receptors), are seen in obesity.<sup>56-58, 149,150</sup> The altered expression of adhesive molecules such as L-selectin (CD62) and the increased expression of death receptors such as the fas antigen (CD95) secondary to inflammation could play a role in the increased incidence of wound infections and cancer in obesity. As white blood cells are unable to migrate to target sites, those that arrive are more susceptible to apoptosis (Figure 2).<sup>56-58</sup>

IL-6 and TNF also promote the secretion of an additional sensitive acute phase protein elevated in trauma and sepsis, serum amyloid A (SAA) (Figure 3).<sup>153,54</sup> SAA, together with CRP, provides us the ability to compare the inflammation present in obesity with other inflammatory states. In trauma and infection, CRP and SAA levels can rise from 200 to 500 fold for CRP and 500 to 2000 fold for SAA, while in morbid obesity they rise 20 fold for CRP and 10 fold for SAA (when compared to lean individuals).<sup>153</sup> Furthermore, levels of SAA correlate with BMI, WHR, CRP and leptin.<sup>92,52,55,156</sup> Perhaps more importantly, in inflammatory conditions such as trauma, sepsis, and rheumatoid arthritis, SAA has been shown to be responsible for the drop in HDL by replacing apolipoproteins A-1 and A-II with

SAA.<sup>157-161</sup> This converts normal HDL (NHDL) into acute phase HDL (APHDL). APHDL is absorbed by macrophages more rapidly and is degraded faster.<sup>153,162-63</sup> Thus, lower levels of HDL are seen in inflammatory conditions. This effect could explain the lower levels of HDL seen in obesity and offers an explanation for increased macrophage lipid uptake in the pathogenesis of atherosclerosis.<sup>52,156,164</sup>

Fibrinogen, like CRP and SAA, is an acute phase reactant produced in the liver, the production of which is controlled by IL-6.<sup>165-167</sup> Fibrinogen is the main determinant of plasma viscosity and plays essential roles in blood rheology, platelet aggregation, and endothelial function.<sup>168-170</sup> Elevated levels have been found in obesity and correlate with CRP, SAA, BMI and WHR in most studies.<sup>171-180</sup> Furthermore, fibrinogen levels decline with weight loss greater than 10%.<sup>50,173,178,180</sup> Certainly, the higher levels of fibrinogen, von Willebrand factor and PAI outlined here, when combined with the elevated levels of Factor VII and Factor VIII, predispose obese patients to a higher risk of thromboembolic complications.<sup>61</sup>

## Treatment of Obesity

The causes of obesity are multifactorial. Current treatment options for mild obesity (BMI<35) include diet and exercise. However, for the majority of patients with a BMI >35, durable non-surgical weight loss has proved unsuccessful for many individuals. It is for these reasons that the NIH recommended in 1991 and in 1998 that surgical treatment be considered for patients with a BMI >40 or for patients with BMI >35 and co-morbid conditions who have failed supervised weight loss attempts.<sup>181,182</sup> Weight loss surgery has been shown to eliminate between 85% and 95% of all co-morbid conditions associated with obesity with an acceptable low morbidity.<sup>183-5</sup> The success of weight loss surgery is related to the anti-inflammatory effects of sustained weight loss. Many of the above studies determined that weight loss was associated with resolution of clinical as well as physiologic phenomena. While many aspects of bariatric physiology remain unclear, there appears to be a strong associ-

ation between obesity and inflammation, thereby rendering obesity a chronic inflammatory state. Chronic inflammation could account for many of the detrimental effects of obesity in these patients. Future studies should further investigate this critical relationship (whether it is in the causal pathway or merely associative) in order to increase our understanding of both the patterns of inflammatory response in the context of obesity and its effect on body physiology.

Dr. Philip Schauer is supported by grants from the following corporations: U. S. Surgical; Computer Motion, Inc.; Stryker Corporation; BERCHTOLD Corporation. Dr. Daniel Cottam is supported by a grant from U.S. Surgical Corp.

## References

1. World Health Organization  
<http://www.who.int/nut/obs.htm>
2. American Obesity Association  
[http://www.obesity.org/sub/fastfacts/obesity\\_US.shtml](http://www.obesity.org/sub/fastfacts/obesity_US.shtml)
3. Allison DB, Fontaine KR, Manson JE et al. Annual deaths attributable to obesity in the United States. *JAMA* 1999; 282: 1530-8.
4. Cancer Facts and Figures 2002. American Cancer Society
5. Visser M, Bouter LM, McQuillan GM et al. Elevated C-reactive protein levels in overweight and obese adults. *JAMA* 1999; 282: 2131-5.
6. Gallagher D, Visser M, Sepulveda D et al. How useful is body mass index for comparison of body fatness across age, gender, and ethnic groups? *Am J Epidemiol* 1996; 143:228-39.
7. Visser M, Bouter LM, McQuillan GM et al. Low grade systemic inflammation in overweight children. *Pediatrics*. 2001; 107: 13-9.
8. Tchernof A, Nolan A, Sites C et al. Weight loss reduces C-reactive protein levels in obese postmenopausal women. *Circulation* 2002; 105: 564-9.
9. Ridker PM, Buring JE, Shih J, et al. Prospective study of C-reactive protein and the risk of future cardiovascular events among apparently healthy women. *Circulation* 1998; 98: 731-3.
10. Koenig W, Sund M, Frohlich M et al. C reactive protein, a sensitive marker of inflammation, predicts future risk of coronary heart disease in initially healthy middle aged men. *Circulation* 1999; 99: 237-42.
11. Ridker PM, Cushman M, Stampfer MJ et al. Plasma concentration of c reactive protein and risk of developing peripheral vascular disease. *Circulation* 1998; 97: 425-8.
12. Havel PJ. Control of energy homeostasis and insulin action by adipocyte hormones: leptin, acylation stimulating protein, and adiponectin. *Curr Opin Lipidol* 2002; 13: 51-9.
13. Maslowska M, Vu H, Phelis S et al. Plasma acylation stim-

- ulating protein, adipsin and lipids in non-obese and obese populations. *Eur J Clin Invest* 1999; 29: 679-86.
14. Heid HW, Moll R, Schwetlick I et al. Adipophilin is a specific marker of lipid accumulation in diverse cell types and diseases. *Cell Tissue Res* 1998; 294: 309-21.
  15. MacNeil DJ, Howard AD, Guan X et al. The role of melanocortins in body weight regulation: opportunities for the treatment of obesity. *Eur J Pharmacol* 2002; 440: 141-57.
  16. Engeli S, Negrel R, Sharma A. Physiology and pathophysiology of the adipose tissue renin-angiotensin system. *Hypertension* 2000; 35: 1270-7.
  17. Curtiss LK, Boisvert WA. Apolipoprotein E and atherosclerosis. *Curr Opin Lipidol* 2000; 11: 243-51.
  18. Inazu AB, Koizumi J, Mabuchi H. Cholesteryl ester transfer protein and atherosclerosis. *Curr Opin Lipidol* 2000; 11: 389-96.
  19. Kersten S, Mandard S, Tan NS et al. Characterization of the fasting-induced adipose factor FIAF, a novel peroxisome proliferator-activated receptor target gene. *J Biol Chem* 2000; 275: 28488-93.
  20. Cannon B, Houstek J, Nedergaard J et al. Brown adipose tissue: More than an effector of thermogenesis. *Ann NY Acad Sci* 1998; 856: 171-87.
  21. Mohamed-Ali V, Pinkney JH, Coppack SW. Adipose tissue as an endocrine and paracrine organ. *Int J Obes* 1998; 22: 1145-58.
  22. Chen NX, Hausman GJ, Wright JT. Influence of thyroxin in vivo on preadipocyte development and insulin like growth factor-I and IGF binding protein secretion in fetal stromal vascular cell cultures. *Obes Res* 1996; 4: 357-66.
  23. Schmidt W, Poll JG, Loffler G. Adipose conversion of 3T3-L1 cells in a serum free culture system depends on epidermal growth factor, insulin like growth factor, corticosterone and cyclic AMP. *J Biol Chem* 1990; 265: 15489-95.
  24. Jequier E. Leptin signaling, adiposity, and energy balance. *Ann NY Acad Sci* 2002; 967: 379-88.
  25. Eckel RH. Lipoprotein lipase: a multifunctional enzyme relevant to common metabolic diseases. *N Engl J Med* 1989; 320: 1060-8.
  26. Trayhurn P, Duncan JS, Wood AM et al. Metallothionein gene expression and secretion by white adipose tissue. *Am J Physiol Regulatory Integrative Physiol Comp* 2000; 279: R2329-35.
  27. Sakaue S, Nishihira J, Hirokawa J. Regulation of macrophage migration inhibitory factor expression by glucose and insulin in adipocytes in vitro. *Mol Med* 1999; 5: 361-71.
  28. Frayn KN. Role of non-esterified fatty acids in the metabolic changes of obesity. *Int J Obes* 1996; 20 (Suppl 4): S7-10.
  29. Vague J, Alessi MC. Regulation of fibrinolysis in the development of atherothrombosis: Role of adipose tissue. *Thromb Haem* 1999; 82: 832-6.
  30. Reginato MJ, Krakow SL, Bailey ST. Prostaglandins promote and block adipogenesis through opposing effects on peroxisome proliferator activated receptor  $\gamma$ . *J Biol Chem* 1998; 273: 1855-58.
  31. Smith U. Resistin - Resistant to defining its role. *Obes Res* 2002; 10: 61-2.
  32. Wolf GD. Release of stored retinol from adipocytes. *Nutr Rev* 1998; 56: 29-30.
  33. Tsutsumi C, Okuno M, Tannous L et al. Retinoids and retinoid binding protein expression in rat adipocytes. *J Biol Chem* 1992; 267: 1805-10.
  34. Labrie F, Simard J, Luu The V et al. Expression of 3 beta hydroxysteroid dehydrogenase, delta 5-delta 4 isomerase and 17 beta-hydroxysteroid dehydrogenase in adipose tissue. *Int J Obes* 1991; 15: 91-9.
  35. Birgel M, Gottschling-Zeller H, Rohrig K et al. Role of cytokines in the regulation of plasminogen activator inhibitor-1 expression and secretion in newly differentiated subcutaneous human adipocytes. *Arterioscler Thromb Vasc Biol* 2000; 20: 1682-7.
  36. Hotamisligil GS. The role of TNF alpha and TNF receptors in obesity and insulin resistance. *J Intern Med* 1999; 245: 621-5.
  37. Schuchert VD, Billiar TR. Inflammation. In: Greenfield LJ, ed. *Surgery Scientific Principles and Practice*, Third Edition. 2001: 134-78.
  38. Messier SP, Loeser RF, Mitchell MN et al. Exercise and weight loss in obese older adults with knee osteoarthritis: a preliminary study. *J Am Geriatr Soc* 2000; 48: 1062-72.
  39. Raymond NC, Dysken M, Bettin K et al. Cytokine production in patients with anorexia nervosa, bulimia nervosa and obesity. *Int J Eat Disord* 2000; 28: 293-302.
  40. Cottam DR, Schaefer PA, Angus LDG et al. Cytokine response to surgically induced weight reduction. *Obes Res* 2000; 8 (Suppl): S8 (abst).
  41. Meier CA, Bobbioni E, Gabay C et al. IL-1 receptor antagonist serum levels are increased in human obesity: A possible link to the resistance to leptin? *J Clin Endocrin Metab* 2002; 87: 1184-8.
  42. Kyzer S, Binyamini J, Chaimoff C et al. The effect of surgically induced weight reduction on the serum levels of the cytokines: interleukin 3 and TNF. *Obes Surg* 1999; 9: 229-34.
  43. Bastard JP, Jardel C, Bruckert E. Elevated levels of IL-6 are reduced in serum and subcutaneous adipose tissue of obese women after weight loss. *J Clin Endocrin Metab* 2000; 85: 3338-45.
  44. Straczkowski M, Dzienis-Straczkowska S, Stepień A et al. Plasma Interleukin-8 concentrations are increased in obese subjects and related to fat mass and tumor necrosis factor system. *J Clin Endocrin Metab* 2002; 87: 4602-6.
  45. Bruun JM, Pedersen SB, Kristensen K et al. Opposite regulation of interleukin-8 and tumor necrosis factor alpha by weight loss. *Obes Res* 2002; 10: 499-506.
  46. Hube F, Lee Y, Birgel M et al. Expression pattern of tumour necrosis factor receptors in subcutaneous and omental human adipose tissue: role of obesity and non-insulin dependent diabetes mellitus. *Eur J Clin Invest* 1999; 29: 672-8.
  47. Alessi MC, Bastelica D, Morange P. Plasminogen activator inhibitor 1, transforming growth factor beta and BMI are closely associated in human adipose tissue during morbid



- obesity. *Diabetes* 2000; 49: 1374-80.
48. Scriba PC, Bauer M, Emmert D et al. Effects of obesity, total fasting and re alimentation on T4, TBG, cortisol, thyrotrophin, transferrin, alpha 2 haptoglobin and complement C3 in serum. *Acta Endocrin* 1979; 91: 629-43.
  49. Laimer M, Ebenbichler CF, Kaser S et al. Markers of chronic inflammation and obesity: a prospective study on the reversibility of this association in middle aged women undergoing weight loss by surgical intervention. *Int J Obes* 2002; 26: 659-62.
  50. Primrose JN, Davies JA, Prentice R et al. Reduction in factor VII, fibrinogen and plasminogen activator inhibitor-1 activity after surgical treatment of morbid obesity. *Thrombosis and Haemostasis* 1992; 68: 396-9.
  51. Juhan-Vague I, Alessi MC, Morange PE. Hypofibrinolysis and increased PAI-1 are linked to atherothrombosis via insulin resistance and obesity. *Ann Med* 2000; 32: 78-84.
  52. Danesh J, Muir J, Wong YK. Risk Factors for coronary heart disease and acute phase proteins. A population based study. *Eur Heart J* 1999; 20: 954-9.
  53. Cignarelli M, DePergola G, Picca G et al. Relationship of obesity and body fat distribution with ceruloplasmin serum levels. *Int J Obes* 1996; 20: 809-13.
  54. Hak AE, Pols HA, Stejpiwer DA et al. Markers of inflammation and cellular adhesion molecules in relation to insulin resistance in nondiabetic elderly: The Rotterdam study. *J Clin Endocrinol Metab* 2001; 86: 4398-405.
  55. Dielen FMH, Veer CV, Schols AM et al. Increased leptin concentrations correlate with increased concentrations of inflammatory markers in morbidly obese individuals. *Int J Obes* 2001; 25: 1759-66.
  56. Cottam DR, Schaefer PA, Shaftan GW et al. Effect of surgically-induced weight loss on leukocyte indicators of chronic inflammation in morbid obesity. *Obes Surg* 2002; 12: 335-42.
  57. Cottam DR, Schaefer PA, Angus LD et al. The effect of obesity on neutrophil Fc receptors and adhesion molecules (CD16, CD11b, CD62L). *Obes Surg* 2002; 12: 230-5.
  58. Cottam DR, Schaefer PA, Angus LD et al. Dysfunctional immune-privilege in morbid obesity: implications and effect of gastric bypass surgery. *Obes Surg* 2003; 13: 49-57.
  59. Pasulka P, Bistrrian BR, Blackburn GL. Obesity and erythrocyte sedimentation rates (Letter). *Ann Intern Med* 1985; 103: 304.
  60. Bacci V, Basso MS, Greco F et al. Modifications of metabolic and cardiovascular risk factors after weight loss induced by laparoscopic gastric banding. *Obes Surg* 2002; 12: 77-82.
  61. Mertens I, Van Gaal LF. Obesity, haemostasis and the fibrinolytic system. *Obes Rev* 2002; 3: 85-101.
  62. Takahashi D, Tamura K, Ushikubo T et al. Relationship between hepatic angiotensinogen mRNA expression and plasma angiotensinogen in patients with chronic hepatitis. *Life Sci* 1997; 60: 1623-33.
  63. Stanley JC, Upchurch GR. Renal artery occlusive disease. In: Greenfield L, ed. *Surgery Scientific Principles and Practices*, Third Edition. 2001: 1709-24.
  64. Kim PK, Deutschman CS. Inflammatory responses and mediators. *Surg Clin North Am* 2000; 80: 885-94.
  65. Gabay C, Kushner I. Acute phase proteins and other systemic responses to inflammation. *N Engl J Med* 1999; 340: 448-54.
  66. Hoj Nielsen A, Knudsen F. Angiotensinogen is an acute-phase protein in man. *Scand J Clin Lab Invest* 1987; 47: 175-8.
  67. Tamura K, Umemura S, Yamakawa T et al. Modulation of tissue angiotensinogen gene expression in genetically obese hypertensive rats. *Am J Physiol* 1997; 272: R1704-11.
  68. Tamura K, Umemura S, Nyui N et al. Tissue specific regulation of angiotensinogen gene expression in SHR. *Hypertension* 1996; 27: 1216-23.
  69. Schorr U, Blaschke K, Turan S et al. Relationship between angiotensinogen, leptin and blood pressure levels in young normotensive men. *J Hypertens* 1998; 16: 1475-80.
  70. Bloen LJ, Manatunga AK, Tewdsbury DA et al. The serum angiotensinogen concentration and variants of the angiotensinogen gene in white and black children. *J Clin Invest* 1995; 95: 948-53.
  71. Umemura S, Nyui N, Tamura K et al. Plasma angiotensinogen concentrations in obese patients. *Am J Hypertens* 1997; 10: 629-33.
  72. Van Harmelen V, Ariapart P, Hoffstedt J et al. Increased adipose angiotensinogen gene expression in human obesity. *Obes Res* 2000; 337-41.
  73. Hall JE, Brands MW, Dixon WN et al. Obesity induced hypertension: Renal function and systemic hemodynamics. *Hypertension* 1993; 22: 292-9.
  74. Dobrian AD, Davies MJ, Prewitt RL et al. Development of hypertension in a rat model of diet induced obesity. *Hypertension* 2000; 35: 1009-15.
  75. Granger JP, West D, Scott J. Abnormal pressure natriuresis in the dog model of obesity induced hypertension. *Hypertension* 1994; 23 (Suppl): S18-21.
  76. Egan BM, Stepniakowski K, Goodfriend TL. Renin and aldosterone are higher and the hyperinsulinemic effect of salt restriction greater in subjects with risk factors clustering. *Am J Hypertens* 1994; 7: 886-93.
  77. Cooper R, McFarlane AN, Bennett FI et al. ACE, angiotensinogen, and obesity: a potential pathway leading to hypertension. *J Hum Hypertens* 1997; 11: 107-11.
  78. Licata G, Scaglione R, Ganguzza A et al. Central obesity and hypertension: Relationship between fasting serum insulin, plasma renin activity and diastolic blood pressure in young obese subjects. *Am J Hypertens* 1994; 7: 314-20.
  79. Giacchetti G, Faloia E, Sardu C et al. Gene expression of angiotensinogen in adipose tissue of obese patients. *Int J Obes* 2000; 24(Suppl 2): S142-3.
  80. Harp JB, Henry SA, DiGirolamo M. Dietary weight loss decreases serum angiotensin-converting enzyme activity in obese adults. *Obes Res* 2002; 10: 985-90.
  81. Rocchini AP, Key J, Bondie D, Chico R et al. The effect of weight loss on the sensitivity of blood pressure to sodium in obese adolescents. *N Engl J Med* 1989; 321: 580-5.
  82. Goodfriend TL, Egan BM, Kelley DE. Aldosterone in obesity. *Endocr Res* 1998; 24: 789-96.
  83. Rocchini AP. Cardiovascular regulation in obesity induced

- hypertension. *Hypertension* 1992; 19 (Suppl): S155-60.
84. Reisin E, Sodium and obesity in the pathogenesis of hypertension. *Am J hypertens* 1990; 3: 164-7.
  85. Hall JE. Mechanisms of abnormal renal sodium handling in obesity hypertension *Am J Hypertens* 1997; 10 (Suppl): S49-55.
  86. Masuo K, Mikami H, Ogiwara T et al. Weight gain induced blood pressure elevation. *Hypertension* 2000; 35: 1135-40.
  87. Masuo K, Mikami H, Ogiwara T et al. Familial hypertension insulin, sympathetic activity, and blood pressure elevation. *Hypertension* 1998; 32: 96-100.
  88. Schuchert VD, Billiar TR. Inflammation. In: Greenfield LJ, Mulholland MW, eds. *Surgery. Scientific Principles and Practice, Third Edition*. 2001: 134-78.
  89. Colletti LM. Cytokines. In: Greenfield LJ ed. *Surgery Scientific Principles and Practice, Third Edition*. 2001: 111-34.
  90. Strieter RM, Lynch JP, Basha MA et al. Host responses in mediating sepsis and the adult respiratory distress syndrome. *Semin Respir Infect* 1990; 5: 233-47.
  91. Tracey KJ, Lowry SF, Cerami A. Cachectin/TNF in septic shock and septic adult respiratory distress syndrome. *Am Rev Respir Dis* 1988; 138: 1377-9.
  92. Schlag F, Redl H, Hallstrom S. The cell in shock: the origin of multiple organ failure. *Resuscitation* 1991; 21: 137-80.
  93. Ksontini R, Mackay SL, Moldawer LL. Revisiting the role of tumor necrosis factor alpha and the response to surgical injury and inflammation. *Arch Surg* 1998; 133: 558-67.
  94. Van Der Poll T, Buller HR, Ten Cate H et al. Activation of coagulation after administration of tumor necrosis factor to normal subjects. *N Engl J Med* 1990; 322: 1622-7.
  95. Oberholzer C, Oberholzer A, Clare-Salzler M et al. Apoptosis in sepsis: a new target for therapeutic exploration. *FASEB* 2001; 15: 879-92.
  96. Kern PA, Saghizadeh M, Ong JM et al. The expression of tumor necrosis factor in human adipose tissue: Regulation by obesity, weight loss, and relationship to lipoprotein lipase. *J Clin Invest* 1995; 95: 2111-9.
  97. Yudkin JS, Stehouwer CDA, Emeis JJ et al. C-Reactive protein in healthy subjects: Associations with obesity insulin resistance, and endothelial dysfunction: A potential role for cytokines originating from adipose tissue. *Arterioscler Thromb Vasc Biol* 1999; 19: 972-8.
  98. Tsukui S, Kanda T, Nara M et al. Moderate intensity regular exercise decreases serum tumor necrosis factor alpha and HbA1c levels in healthy women. 2000; 9: 1207-11.
  99. Zahorska-Markiewicz B, Janowska J, Olszanecka-Glinianowicz M, et al. Serum concentrations of TNF-alpha and soluble TNF-alpha receptors in obesity. *Int J Obes* 2000; 11: 1392-5.
  100. Bruun JM, Pedersen SB, Kristensen K et al. Opposite regulation of interleukin-8 and tumor necrosis factor alpha by weight loss. *Obes Res* 2002; 10: 499-506.
  101. Miller Cl, Graziano C, Lim RC et al. Generation of tissue factor by patient monocytes: correlation to thromboembolic complications. *Thromb Haemost* 1981; 42: 489-95.
  102. Blakowski, SA, Zackarski LR, Beck JR. Postoperative elevation of human peripheral blood monocyte tissue factor coagulant activity. *J Lab Clin Med* 1986; 108: 117-20.
  103. Ollivier V, Sheibani A, Chollet-Martin S et al. Monocyte procoagulant activity and membran associated D Dimer after knee replacement surgery. *Thromb Res* 1989; 55: 179-85.
  104. Van Der Poll T, Van Deventer SHJ, Pasterkamp G et al. Tumor necrosis factor induces von Willebrand factor release in healthy humans. *Thromb Haemost* 1992; 67: 623-6.
  105. De Pergola G, De Mitrio V, Giorgino F et al. Increase in both pro-thrombotic and anti-thrombotic factors in obese premenopausal women: relationship with body fat distribution. *Int J Obes* 1997; 21: 527-35.
  106. Cigolini M, Tonoli M, Borgato L et al. Expression of plasminogen activator inhibitor-1 in human adipose tissue: a role for TNF- $\alpha$ . *Atherosclerosis* 1999; 143: 81-90.
  107. Loskutoff D, Samad F. The adipocyte and hemostatic balance in obesity: studies of PAI-1. *Arterioscler Thromb Biol* 1998; 18: 1-6.
  108. Alessi MC, Morange P, Juhan-Vague I. Fat cell function and fibrinolysis. *Horm Metab Res* 2000; 32: 504-8.
  109. Birgel M, Bottschling-Zeller H, Rohrig K et al. Role of cytokines in the regulation of plasminogen activator inhibitor-1 expression and secretion in newly differentiated subcutaneous human adipocytes. *Arterioscler Thromb Vasc Biol* 2000; 20: 1682-7.
  110. Samad F, Yamamoto K, Pandey M et al. Elevated expression of transforming growth factor beta in adipose tissue from obese mice. *Mol Med* 1997; 3: 37-40.
  111. Agostino G, Tonoli M, Deorsola B et al. PAI-1 release from human adipose tissue is stimulated by TNF-alpha. *Thromb Haemost* 1997; 77 (Suppl): S749 (abst).
  112. Samad F, Teoman K, Wiesbrock SM et al. Tumor necrosis factor alpha is a key component in the obesity-linked elevation of plasminogen activator inhibitor 1. *Proc Natl Acad Sci* 1999; 96: 6902-7.
  113. Fruhbeck G, Gomez-Amrosi JG, Murazabal JF et al. The adipocyte: a model for integration of endocrine and metabolic signaling in energy metabolism regulation. *Am J Physiol Endocrinol Metab* 2001; 280: 827-47.
  114. Folsom AR, Hekmat T, Qamhieh T et al. Impact of weight loss on plasminogen activator inhibitor, factor VII and other hemostatic factors in moderately overweight adults. *Arterioscler Thromb*. 1993; 13: 162-9.
  115. Mavri A, Stegnar M, Krebs M et al. Impact of adipose tissue on plasma plasminogen activator inhibitor-1 in dieting obese women. *Arterioscler Thromb Vasc Biol* 1999; 19: 1582-7.
  116. Hauner H, Petruschke T, Russ M et al. Effects of tumour necrosis factor alpha on glucose transport and lipid metabolism of newly differentiated human fat cells in culture. *Diabetologia* 1995; 38: 764-71.
  117. Liu LS, Spelleken M, Rohrig K et al. Tumor necrosis factor alpha acutely inhibits insulin signaling in human adipocytes – implication of the P80 tumor necrosis factor receptor. *Diabetes* 1998; 47: 515-22.
  118. Lang CH, Dobrescu C, Bagby GJ et al. Tumor necrosis factor impairs insulin action on peripheral glucose disposal

- and hepatic glucose output. *Endocrinology* 1992; 130: 43-52.
119. Sethi JK, Hotamisligil GS. The role of TNF $\alpha$  in adipocyte metabolism. *Semin Cell Dev Biol* 1999; 10: 19-29.
  120. Peraldi P, Xu M, Spiegelman BM et al. Thiazolidinediones block tumor necrosis factor alpha induced inhibition of insulin signaling. *J Clin Invest* 1997; 100: 1863-9.
  121. Miles PD, Romeo OM, Higo K et al. TNF alpha induced insulin resistance in vivo and its prevention by troglitazone. *Diabetes* 1997; 46:1678-83.
  122. Hoffmann C, Lorenz K, Braithwaite SS et al. Altered gene expression for tumor necrosis factor alpha and its receptors during drug and dietary modulation of insulin resistance. *Endocrinology* 1994; 134: 264-70.
  123. Saghizadeh M, Ong HM, Garvey WT et al. The expression of TNF $\alpha$  by human muscle: Relationship to insulin resistance. *J Clin Invest* 1996; 97: 1111-6.
  124. Gimble RF. Inflammatory status and insulin resistance. *Curr Opin Clin Nutr Metab Care* 2002; 5: 551-9.
  125. Zahorska-Markiewicz B, Janowska J et al. Serum concentration of TNF $\alpha$  and soluble TNF receptors in obesity. *Int J Obes* 2000; 24: 1392-5.
  126. Murase K, Odaka H, Suzuki M et al. Pioglitazone time dependently reduces tumour necrosis factor alpha level in muscle and improves metabolic abnormalities in wistar fatty rats. *Diabetologia* 1998; 41: 257-64.
  127. Moller DE. Potential role of TNF alpha in the pathogenesis of insulin resistance and type 2 diabetes. *Trends Endocrinol Metab*. TEM 2000; 11: 212-17.
  128. Uysal KT, Wiesbrock SM, Marino MW et al. Protection from obesity induced insulin resistance in mice lacking TNF alpha function. *Nature* 1997; 389: 610-4.
  129. Ventre J, Doebber T, Wu M et al. Targeted disruption of the tumor necrosis factor alpha gene metabolic consequences in obese and non-obese mice. *Diabetes* 1997; 46:1526-31.
  130. Uysal KT, Wiesbrock SM, Hotamisligil GS et al. Functional analysis of TNF receptors in TNF alpha mediated insulin resistance in genetic obesity. *Endocrinology* 1998; 139: 4832-8.
  131. Greenway SE, Greenway FL, Klein S. Effects of obesity surgery on non-insulin-dependent diabetes mellitus. *Arch Surg* 2002; 137: 1109-17.
  132. Raymond NC, Dysken M, Bettin K et al. Cytokine production in patients with anorexia nervosa, bulimia nervosa and obesity. *Int J Eat Disord* 2000; 28: 293-302.
  133. Coppack SW. Pro inflammatory cytokines and adipose tissue. *Proc Nutr Soc* 2001; 60: 349-56.
  134. Cesaris P, Starace D, Riccioli A et al. Tumor necrosis factor alpha induces interleukin 6 production and integrin ligand expression by distinct transduction pathways. *J Biol Chem* 1998; 273: 7566-71.
  135. Stephens JM, Butts MD, Pekala PH. Regulation of transcription factor mRNA accumulation during 3T3-L1 preadipocyte differentiation by tumor necrosis factor alpha. *J Mol Endocrinol* 1992; 9:61-72.
  136. Yudkin JS, Kumari M, Humphries SE et al. Inflammation, obesity, stress and coronary heart disease: is interleukin-6 the link. *Atherosclerosis* 2000; 148: 209-14.
  137. Chan JC, Cheung JC, Stehouwer CD et al. The central roles of obesity associated dyslipidaemia, endothelial activation and cytokines in the metabolic syndrome – an analysis by structural equation modelling. *Int J Obes* 2002; 26: 994-1008.
  138. Ziccardi P, Nappo F, Giugliano G et al. Reduction of inflammatory cytokine concentrations and improvement of endothelial functions in obese women after weight loss over one year. *Circulation* 2002; 105: 804-9.
  139. Fruhbeck G, Gomez-Ambrosi J, Muruzabal FJ et al. The adipocyte: a model for integration of endocrine and metabolic signaling in energy metabolism regulation. *Am J Physiol Endocrinol Metab* 2001; 280: E827-47.
  140. Grunfeld C, Gulli R, Moser AH et al. Effect of tumor necrosis factor administration in vivo on lipoprotein lipase activity in various tissues of the rat. *J Lipid Res* 1989; 30: 579-85.
  141. Bastard JP, Jardel C, Bruckert E et al. Elevated levels of interleukin 6 are reduced in serum and subcutaneous adipose tissue of obese women after weight loss. *J Clin Endocrinol Metab* 2000; 85: 3338-45.
  142. Mohamed-Ali V, Pinkney JH, Coppack SW. Adipose tissue as an endocrine and paracrine organ. *Int J Obes* 1998; 22: 1145-58.
  143. Ridker PM, Hemmekens CH, Buring JE et al. C-reactive protein and other markers of inflammation in the prediction of cardiovascular disease in women. *N Engl J Med* 2000; 342: 836-43.
  144. Tsukui S, Kanda T, Nara M et al. Moderate intensity regular exercise decreases serum tumor necrosis factor alpha and HbA1c levels in healthy women. *Int J Obes* 2000; 24: 1207-11.
  145. Kern A, Saghizadeh M, Ong JM et al The expression of tumor necrosis factor in human adipose tissue regulation by obesity, weight loss and relationship to lipoprotein lipase. *J Clin Invest* 1995; 95: 2111-9.
  146. Du Clos TW. Function of C-reactive protein. *Ann Med* 2000; 32: 274-8.
  147. Das UN. Is obesity an inflammatory condition? *Nutrition* 2001; 17: 953-66.
  148. Weinhold B, Ruther U. Interleukin-6 dependent and independent regulation of the human C-reactive protein gene. *J Biochem* 1997; 327: 425-29.
  149. Arbones ML, Ord DC, Ley K et al. Lymphocyte homing and leukocyte rolling and migration are impaired in L-selectin deficient mice. *Immunity* 1994; 1: 247-60.
  150. Zouki C, Beauchamp M, Baron C et al. Prevention of in vitro neutrophil adhesion to endothelial cells through shedding of l-selectin by C-reactive protein and peptides derived from C-reactive protein. *J Clin Invest*. 1997; 100: 522-9.
  151. Vgontzas AN, Papanicolaou DA, Bixler EO et al. Sleep apnea and daytime sleepiness and fatigue: relation to visceral obesity, insulin resistance, and hypercytokinemia. *J Clin Endocrinol Metab* 2000; 85: 1151-8.
  152. Ford ES, Galuska DA, Gillespie C et al. C reactive protein and body mass index in children: Findings from the third national health and nutrition examination survey, 1988-94.

- J Pediatr 2001; 138: 486-92.
153. Malle E, De Beer FC. Human serum amyloid A protein: a prominent acute phase reactant for clinical practice. *Eur J Clin Invest* 1996; 26: 427-35.
  154. Jensen LE, Whitehead AS. Regulation of serum amyloid A protein expression during the acute phase response. *J Biochem* 1998; 334: 489-503.
  155. Jousilahti P, Salomaa V, Rasi V et al. The association c-reactive protein, serum amyloid A and fibrinogen with prevalent coronary heart disease – baseline findings of the PAIS project. *Atherosclerosis* 2001; 156: 451-6.
  156. Pruzanski W, Stefanski E, de Beer FC et al. Comparative analysis of lipid composition of normal and acute phase high density lipoproteins. *J Lipid Res* 2000; 41: 1035-47.
  157. Coetzee GA, Strachan DR, van der Westhuyzen HC et al. Serum amyloid A containing human high-density lipoprotein 3. Density, size, and apolipoprotein composition. *J Biol Chem* 1986; 261: 9644-51.
  158. Malle EA, Steinmetz A, Raynes JG. Serum amyloid A: an acute phase protein and apolipoprotein. *Atherosclerosis* 1993; 102: 131-46.
  159. De Beer FC, Fagan GR, Gughes RK et al. Serum amyloid a protein concentrations in inflammatory diseases and its relationship to the incidence of reactive systemic amyloidosis. *Lancet* 1982; 2: 231-4.
  160. Urieli-Shoval S, Linke R, Matzner Y. Expression and function of serum amyloid A, a major acute phase protein, in normal and disease states. *Curr Opin Hematol* 2000; 7: 64-9.
  161. Baussermann LL, Herber PN. Degradation of serum amyloid A and apolipoproteins by serum proteases. *Biochemistry* 1984; 23: 2241-5.
  162. Kisilevsky R, Subrahmanyam L. Serum amyloid A changes high-density lipoprotein's cellular affinity. A clue to serum amyloid A's principal function. *Lab Invest* 1992; 66: 778-85.
  163. Liuzzo G, Biasucci LM, Gallimor JR et al. The prognostic value of C-reactive protein and serum amyloid A protein in severe unstable angina. *N Engl J Med* 1994; 331: 417-24.
  164. McCarty MF. Interleukin-6 as a central mediator of cardiovascular risk associated with chronic inflammation, smoking, diabetes, and visceral obesity: down-regulation with essential fatty acids, ethanol and pentoxifylline. *Med Hypotheses* 1999; 52: 465-77.
  165. Amrani DL. Regulation of fibrinogen biosynthesis; glucocorticoid and interleukin-6 control. *Blood Coagulation and Fibrinolysis* 1990; 1: 443-6.
  166. Kerr R, Stirling D, Ludlam C. Interleukin 6 and haemostasis. *Br J Haematol* 2001; 115: 3-12.
  167. Cook NS, Ubben D. Fibrinogen as a major risk factor in cardiovascular disease. *Trends Pharm Sci* 1990; 11: 444-51.
  168. Dormandy JA, Reid HL. Controlled defibrination in the treatment of peripheral vascular disease. *Angiology* 1978; 29: 80-8.
  169. Meade TW, Vickers MV, Thompson SG. The effect of physiological levels of fibrinogen on platelet aggregation. *Thromb Res* 1985; 38: 527-34.
  170. Ernst E, Resch KL. Fibrinogen as a cardiovascular risk factor: a meta analysis and review of the literature. *Ann Intern Med* 1993; 118: 956-63.
  171. Rillaerts E, Van Gaal L, Xiang DZ. Blood viscosity in human obesity: relation to glucose tolerance and insulin status. *Int J Obes* 1989; 13: 7139-45.
  172. Fanari P, Somazzi R, Nasrawi F et al. Haemorheological changes in obese adolescents after short-term diet. *Int J Obes* 1993; 17: 487-94.
  173. Avellone G, Di Garbo V, Cordova R et al. Evaluation of cardiovascular risk factors in overweight and obese subjects. *Int Angiol* 1994; 13: 25-9.
  174. Licata G, Scaglione R, Avellone G et al. Hemostatic function in young subjects with central obesity: relationship with left ventricular function. *Metabolism* 1995; 44: 1417-21.
  175. Landin K, Stigendal L, Eriksson E et al. Abdominal obesity is associated with an impaired fibrinolytic activity and elevated plasminogen activator inhibitor-1. *Metabolism* 1990; 10: 1044-48.
  176. Avellone G, DiGarbo V, Cordova R et al. Coagulation, fibrinolysis and haemorheology in premenopausal obese women with different body fat distribution. *Thromb Res* 1994; 75: 223-31.
  177. Dahlgren F, Janson PO, Johansson S et al. Hemostatic and metabolic variables in women with PCOS. *Fertil Steril* 1994; 61: 455-60.
  178. Ditschuneit HH, Flechtner-Mors M, Adler G. Fibrinogen in obesity before and after weight reduction. *Obes Res* 1995; 3: 43-8.
  179. Cigolini M, Targher G, Bergamo A et al. Visceral fat accumulation and its relation to plasma hemostatic factors in healthy men. *Arterioscler Thromb Vasc Biol* 1996; 16: 368-74.
  180. Marckmann P, Toubro S, Astrup A. Sustained improvement in blood lipids, coagulation, and fibrinolysis after major weight loss in obese subjects. *Eur J Clin Nutr* 1998; 52: 329-33.
  181. Gastrointestinal surgery for severe obesity. National Institutes of Health Consensus Development Conference Draft Statement. *Obes Surg* 1991; 1: 257-66.
  182. Executive Summary. *Obes Res* 1998; 6 (Suppl 2): S51S-63.
  183. Stubbs RS, Wickremesekera SK. Insulin resistance in the severely obese and links with metabolic co-morbidities. *Obes Surg* 2002; 12: 343-8.
  184. Pories WJ. Why does the gastric bypass control type 2 diabetes mellitus? *Obes Surg* 1992; 2: 303-11.
  185. Schauer PR, Ikramuddin S, Gourash W. Outcomes after laparoscopic Roux-en-Y gastric bypass for morbid obesity. *Ann Surg* 2000; 232: 515-29.

(Received January 2, 2004; accepted February 10, 2004)